

# Summary

The data in this report can be viewed as a midpoint in Oregon Tribes' journey towards health and well-being for their communities. Tribes and tribal members have faced many historical injustices, and continue to experience inequities across many social and economic determinants of health. Despite these challenges, AI/AN in Oregon have made considerable progress on key health measures. Indian health clinics in Oregon continue to work toward improving patient care, and have shown improvements across many clinical screening and disease management indicators.

However, AI/AN in Oregon continue to face many health disparities. All-cause mortality rates for AI/AN are approximately 43% higher than the rates for NHW in the state. Heart disease, diabetes, and cancer pose heavy burdens for tribal communities. Unintentional injuries are also concerning, particularly among children and young adults. Motor vehicle crashes and accidental overdose are the leading contributors to unintentional injury deaths among AI/AN in Oregon. Rates of suicide, binge drinking, and drug and alcohol associated deaths are higher among AI/AN than NHW.

Many of these health conditions are preventable. Programs aimed at encouraging healthy lifestyles are the best approach for addressing many of the health disparities experienced by AI/AN in Oregon. Avoiding tobacco, getting regular physical exercise, eating a healthful diet, and maintaining a healthy body weight are key to preventing and managing heart disease and diabetes. These factors also protect against many types of cancer. Injury prevention efforts focused on motor vehicle safety and overdose prevention are particularly needed among youth. Mental health programs, including suicide prevention and campaigns targeting substance abuse, will have broad reaching effects across the spectrum of both community and personal health and well-being. Finally, being able to access affordable and quality healthcare close to home is key to maintaining good physical and mental health throughout life.

This report shows a baseline of where we stand today. It can also help Tribes plant the seeds for healthier AI/AN communities by showing the strong roots from which to grow, and uncovering the challenges that must be addressed.



# Appendix J: Maps

The maps presented in this section show how mortality and hospitalization rates for AI/AN vary across the state of Oregon. Lighter color indicates a lower rate, and darker color higher rates. Rates are given for “health districts”, which are based on the healthcare/emergency preparedness regions designated by the state Office of Emergency Management, with some changes to better align with tribal areas.

Counties included in each district are:

**District 1 (Northwest):** Clatsop, Tillamook, Yamhill, Polk, Marion, Lincoln, Benton, Linn, Columbia, Washington

**District 2 (Portland):** Multnomah, Clackamas

**District 3 (Southwest):** Lane, Douglas, Coos, Curry

**District 4 (South):** Josephine, Jackson, Klamath, Lake

**District 5 (Central):** Hood River, Wasco, Sherman, Gilliam, Wheeler, Grant, Jefferson, Crook, Deschutes, Harney, Baker, Malheur

**District 6 (North East):** Morrow, Umatilla, Union, Wallowa

Tribal lands are found in the following districts:

Confederated Tribes of Grand Ronde: District 1

Confederated Tribes of Siletz Indians: District 1

Coos, Lower Umpqua and Suislaw Tribes: District 3

Coquille Tribe: District 3

Cow Creek Band of Umpquas: District 3

Klamath Tribes: District 4

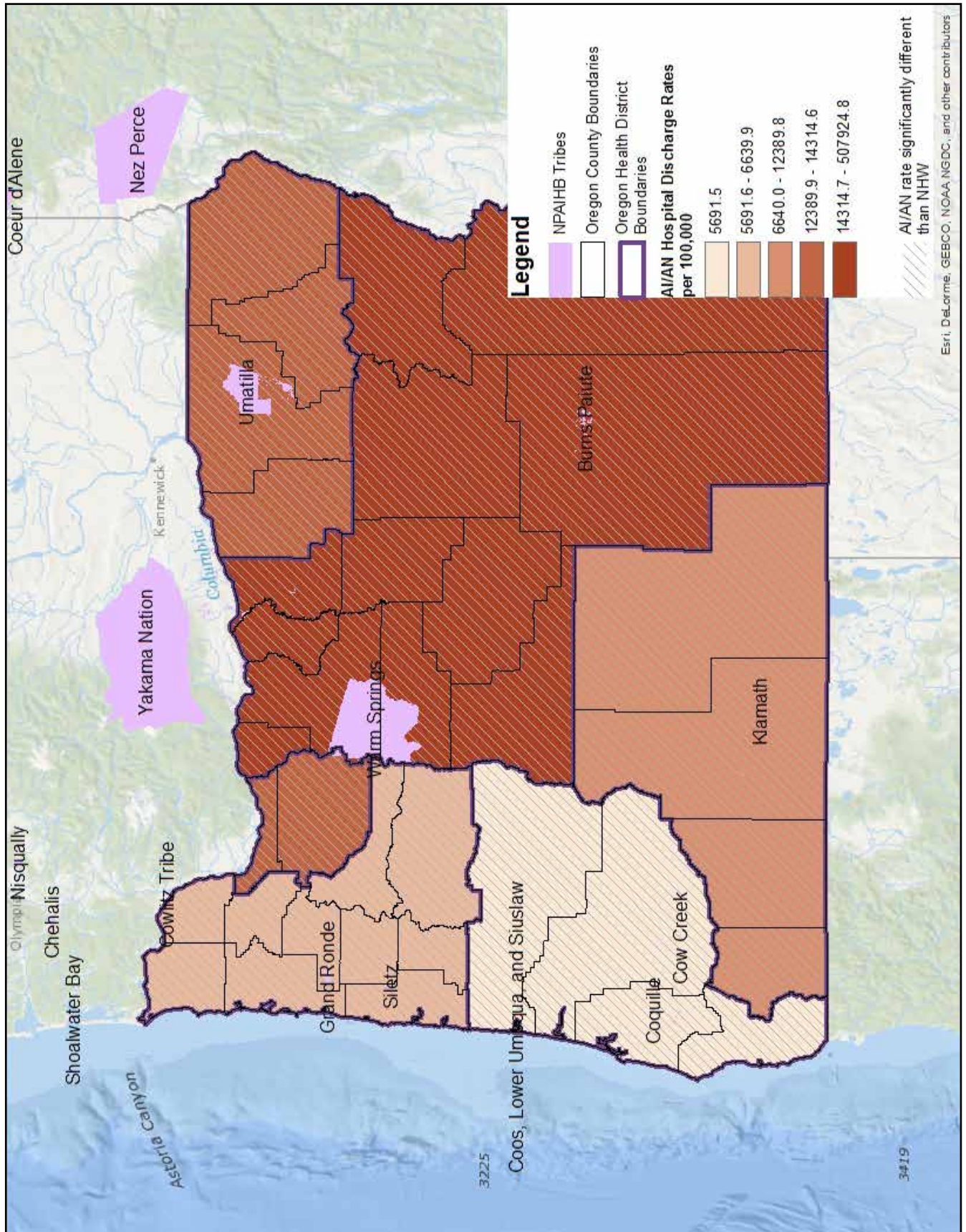
Confederated Tribes of Warm Springs: District 5

Burns Paiute Tribe: District 5

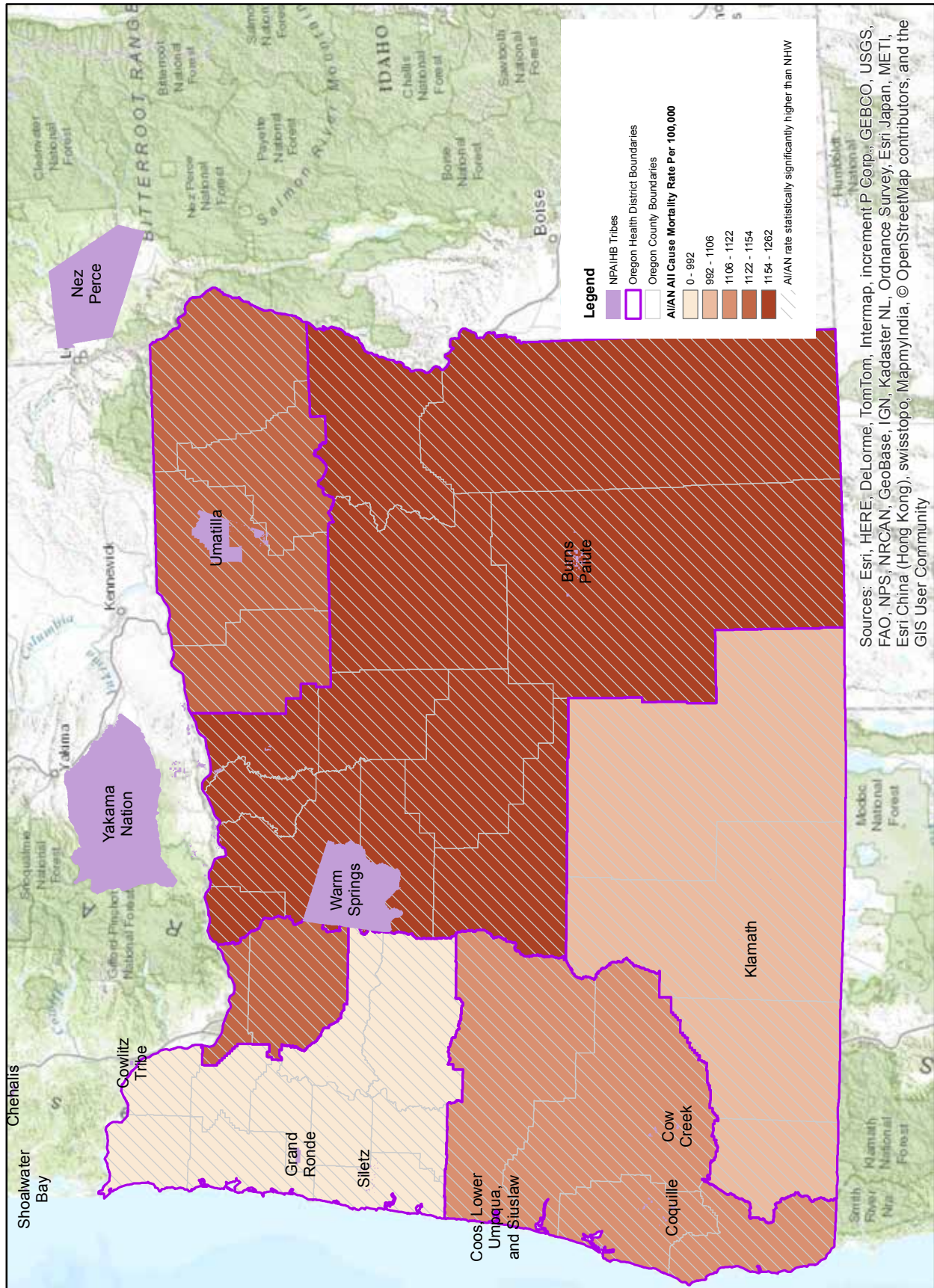
Confederated Tribes of the Umatilla Indian Reservation: District 6

Districts shown with diagonal lines across are those for which the AI/AN rate was statistically significantly higher than the NHW rate in the district. Districts show as plain white are those for which there were fewer than five AI/AN cases and thus the rates were not calculated.

Map 1: AI/AN age-adjusted hospital discharge rates by health district, Oregon, 2010-2011.

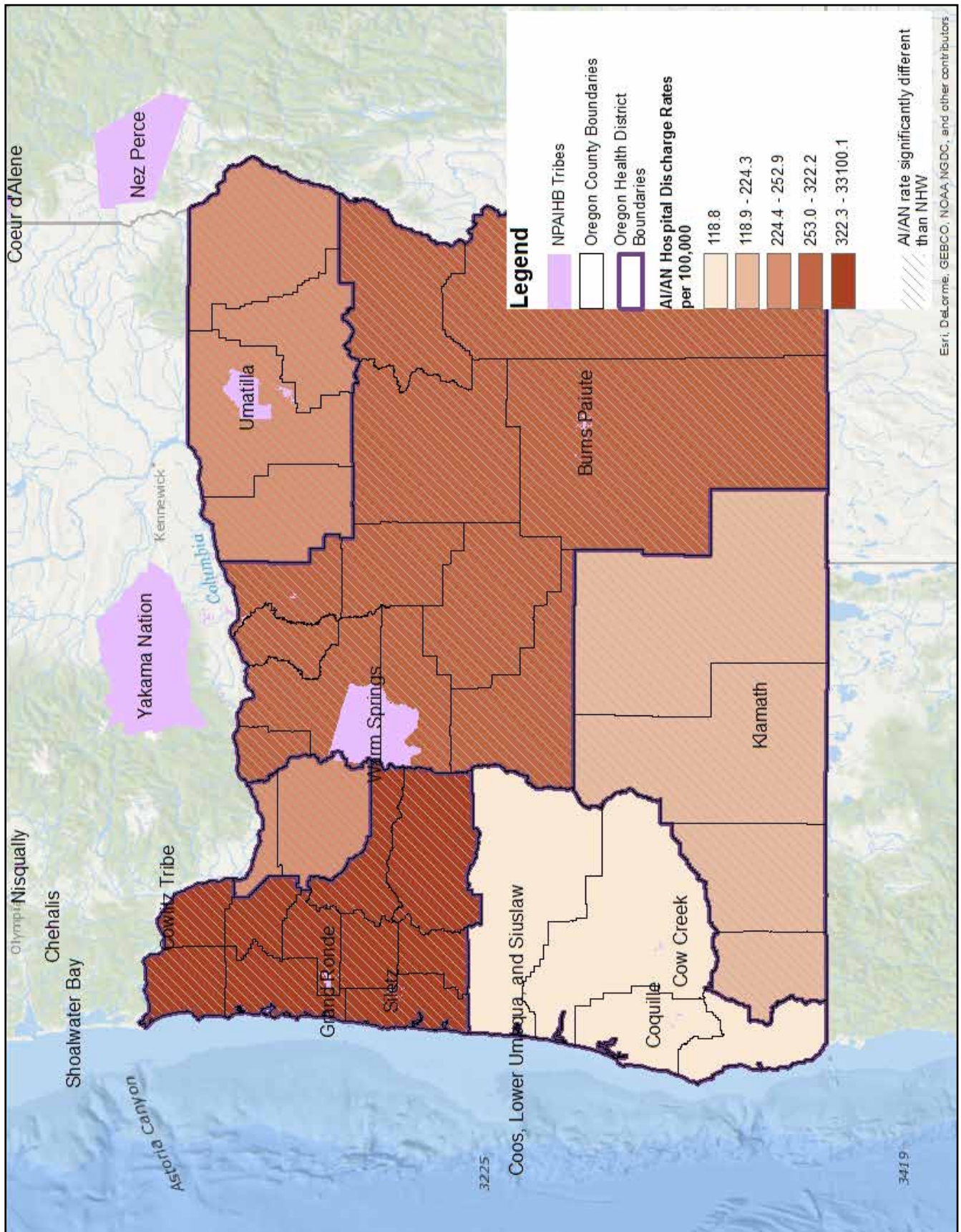


Map 2: AI/AN age-adjusted all-cause mortality rates by health district, Oregon, 2006-2010.

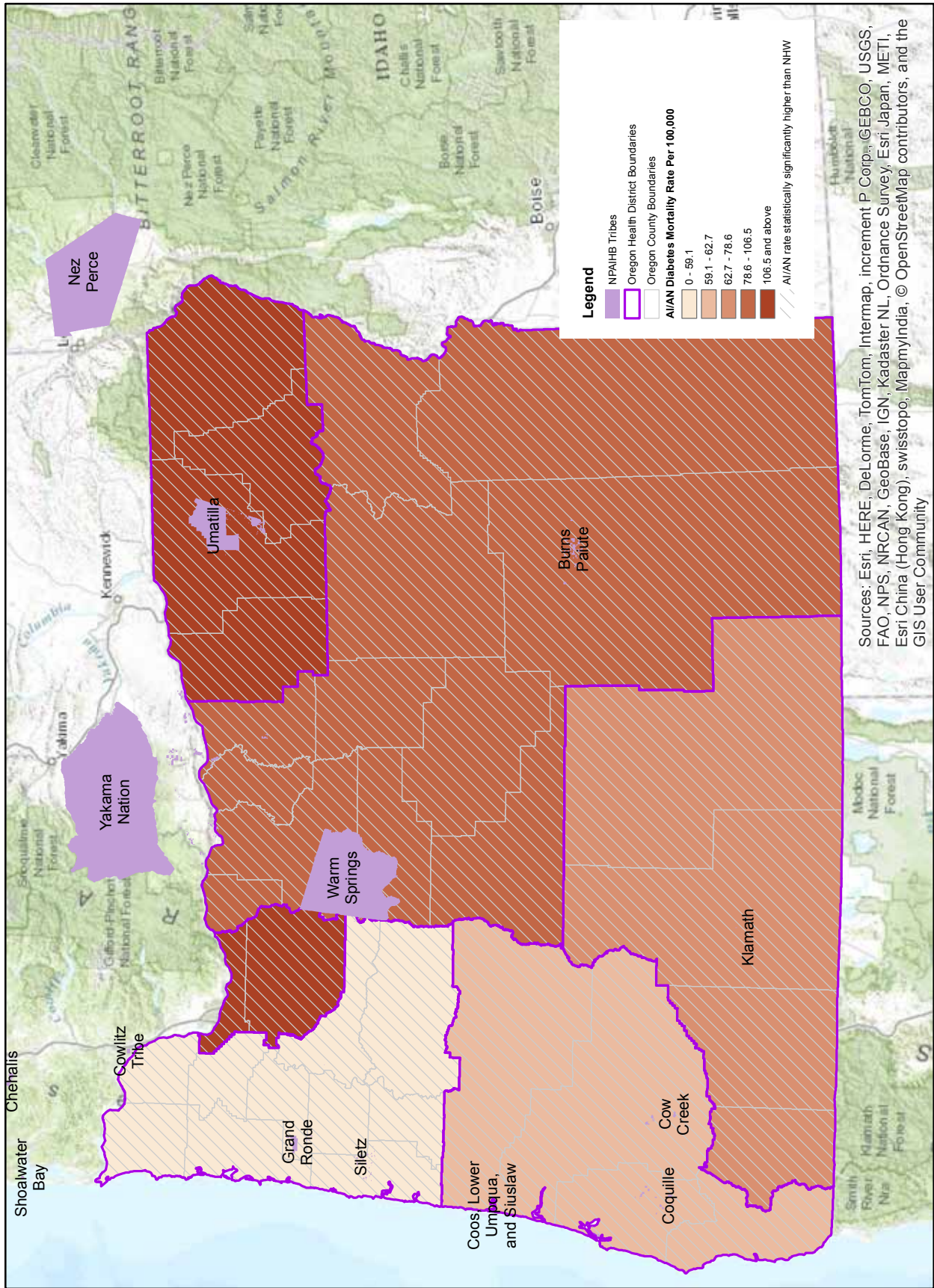


Sources: Esri, HERE, DeLorme, TomTom, Intermap, increment P Corp., GEBCO, USGS, FAO, NPS, NRCAN, GeoBase, IGN, Kadaster NL, Ordnance Survey, Esri Japan, METI, Esri China (Hong Kong), swisstopo, MapmyIndia, © OpenStreetMap contributors, and the GIS User Community

**Map 3: AI/AN age-adjusted diabetes hospital discharge rates by health district, Oregon, 2010-2011.**

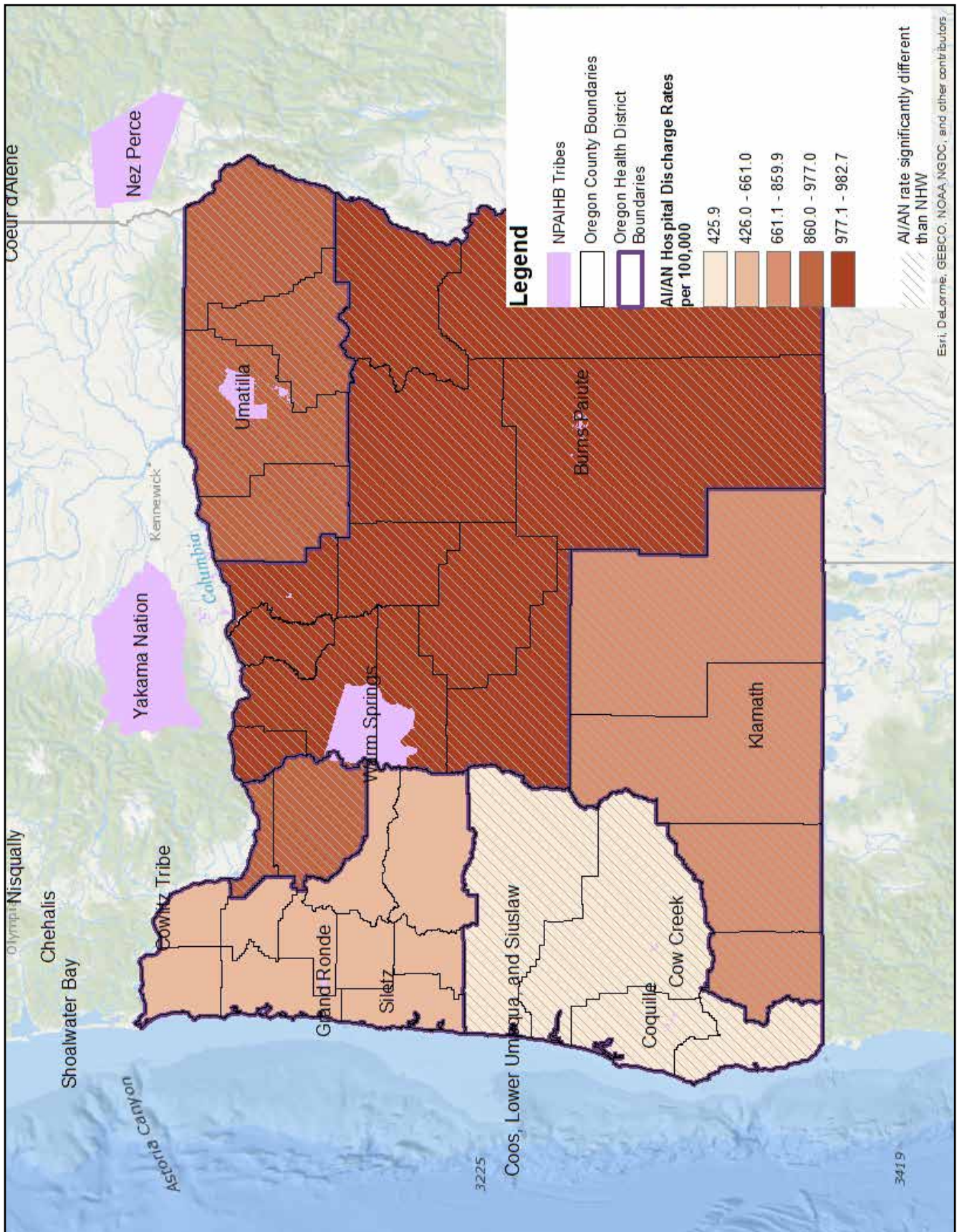


Map 4: AI/AN age-adjusted diabetes mortality rates by health district, Oregon, 2006-2010.



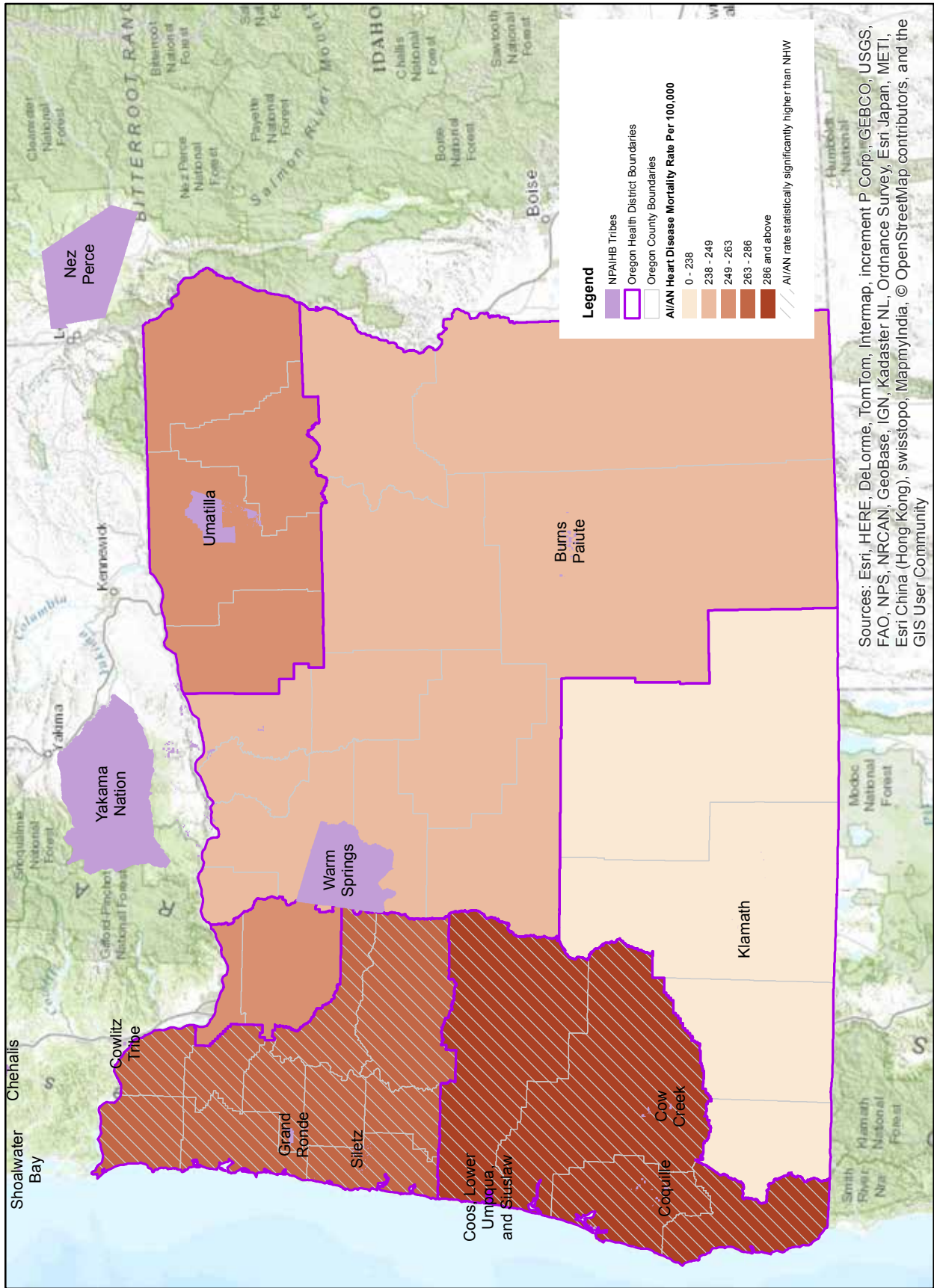
Sources: Esri, HERE, DeLorme, TomTom, Intermap, increment P Corp., GEBCO, USGS, FAO, NPS, NRCAN, GeoBase, IGN, Kadaster NL, Ordnance Survey, Esri Japan, METI, Esri China (Hong Kong), swisstopo, MapmyIndia, © OpenStreetMap contributors, and the GIS User Community

**Map 5: AI/AN age-adjusted heart disease hospital discharge rates by health district, Oregon, 2010-2011.**



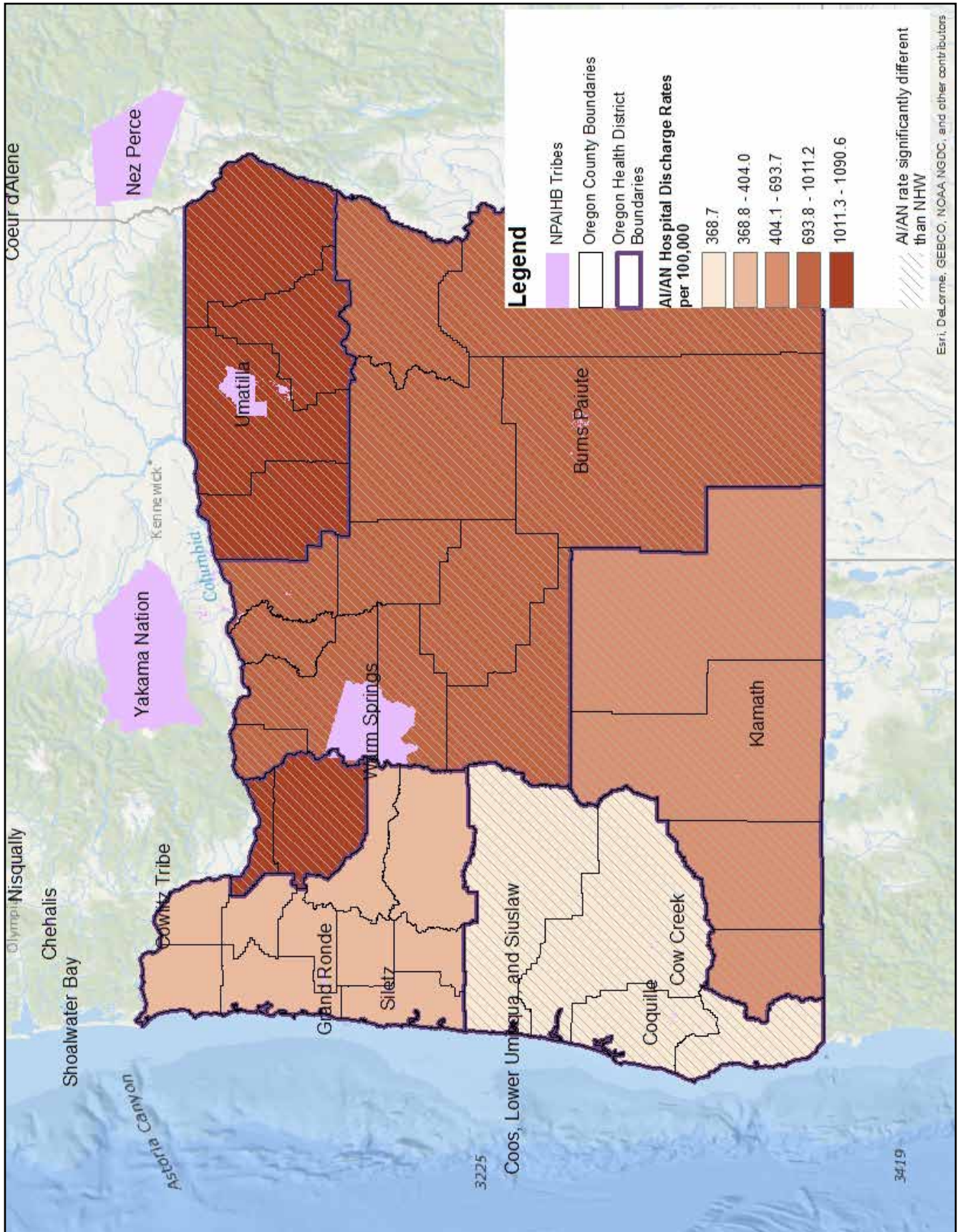


Map 6: AI/AN age-adjusted heart disease mortality rates by health district, Oregon, 2006-2010.



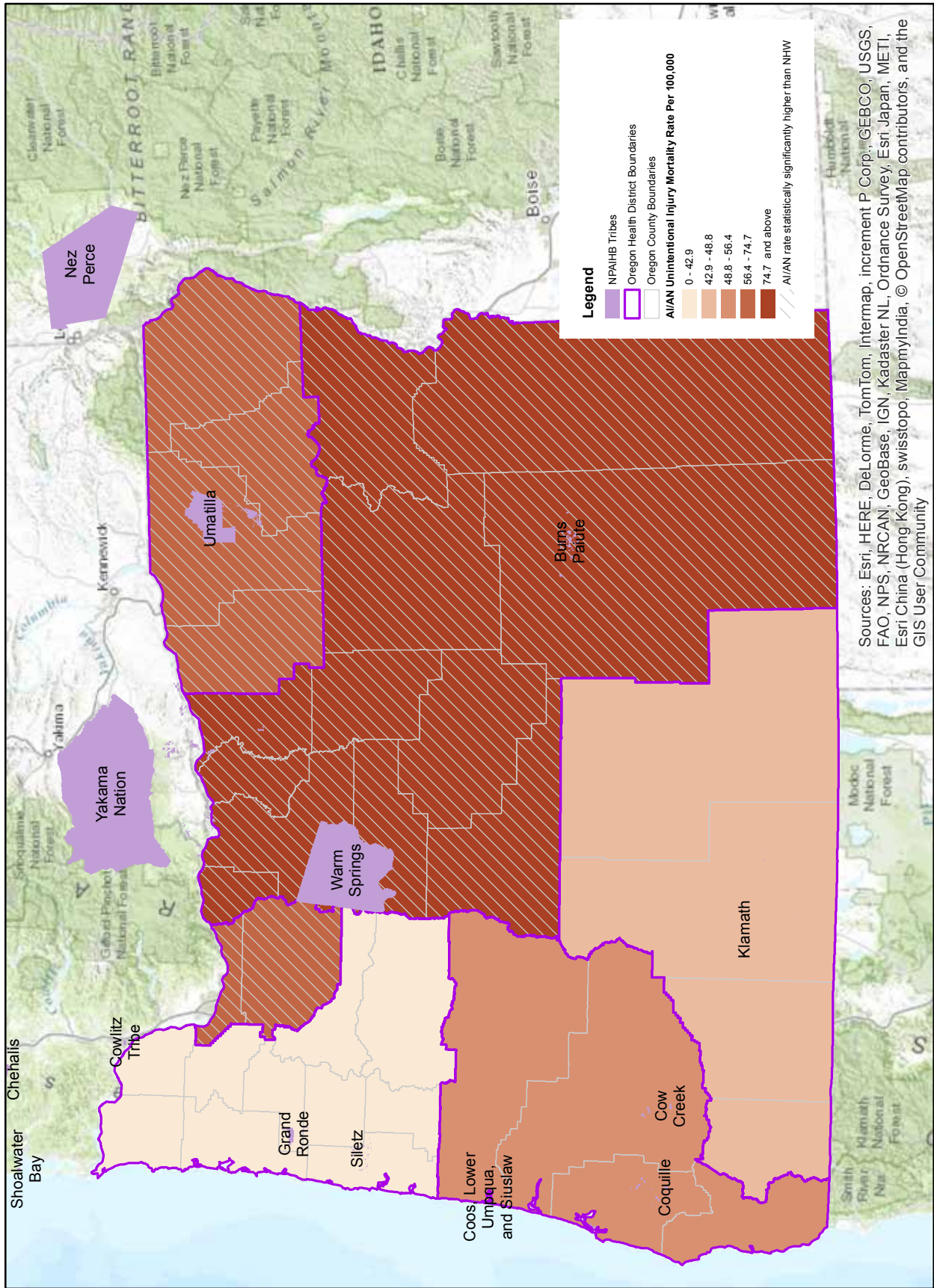
Sources: Esri, HERE, DeLorme, TomTom, Intermap, increment P Corp., GEBCO, USGS, FAO, NPS, NRCAN, GeoBase, IGN, Kadaster NL, Ordnance Survey, Esri Japan, METI, Esri China (Hong Kong), swisstopo, MapmyIndia, © OpenStreetMap contributors, and the GIS User Community

**Map 7: AI/AN age-adjusted unintentional injury hospital discharge rates by health district, Oregon, 2010-2011.**



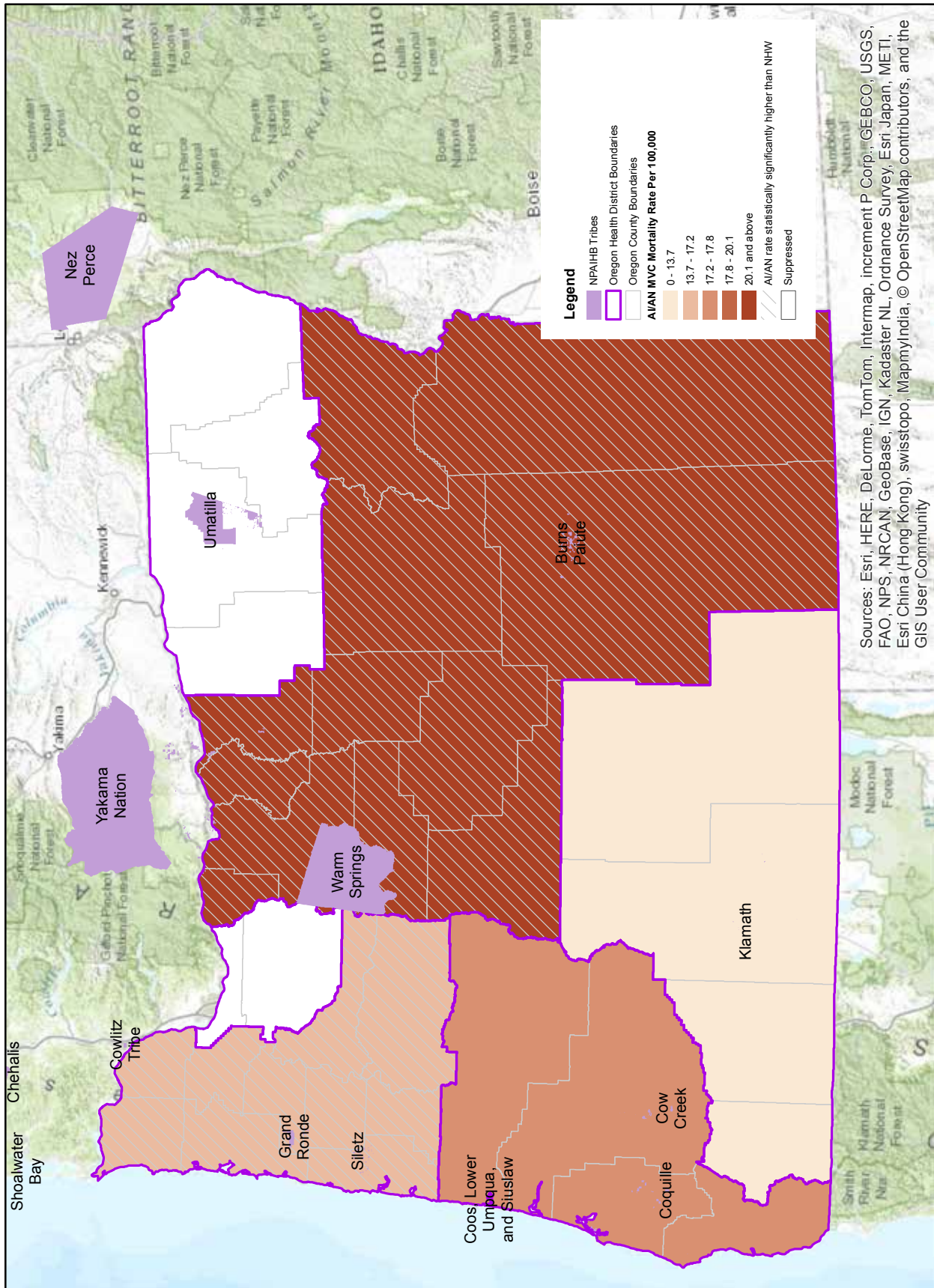
Esri, DeLorme, SEBCO, NOAA, NGDC, and other contributors

Map 8: AI/AN age-adjusted unintentional injury mortality rates by health district, Oregon, 2006-2010.



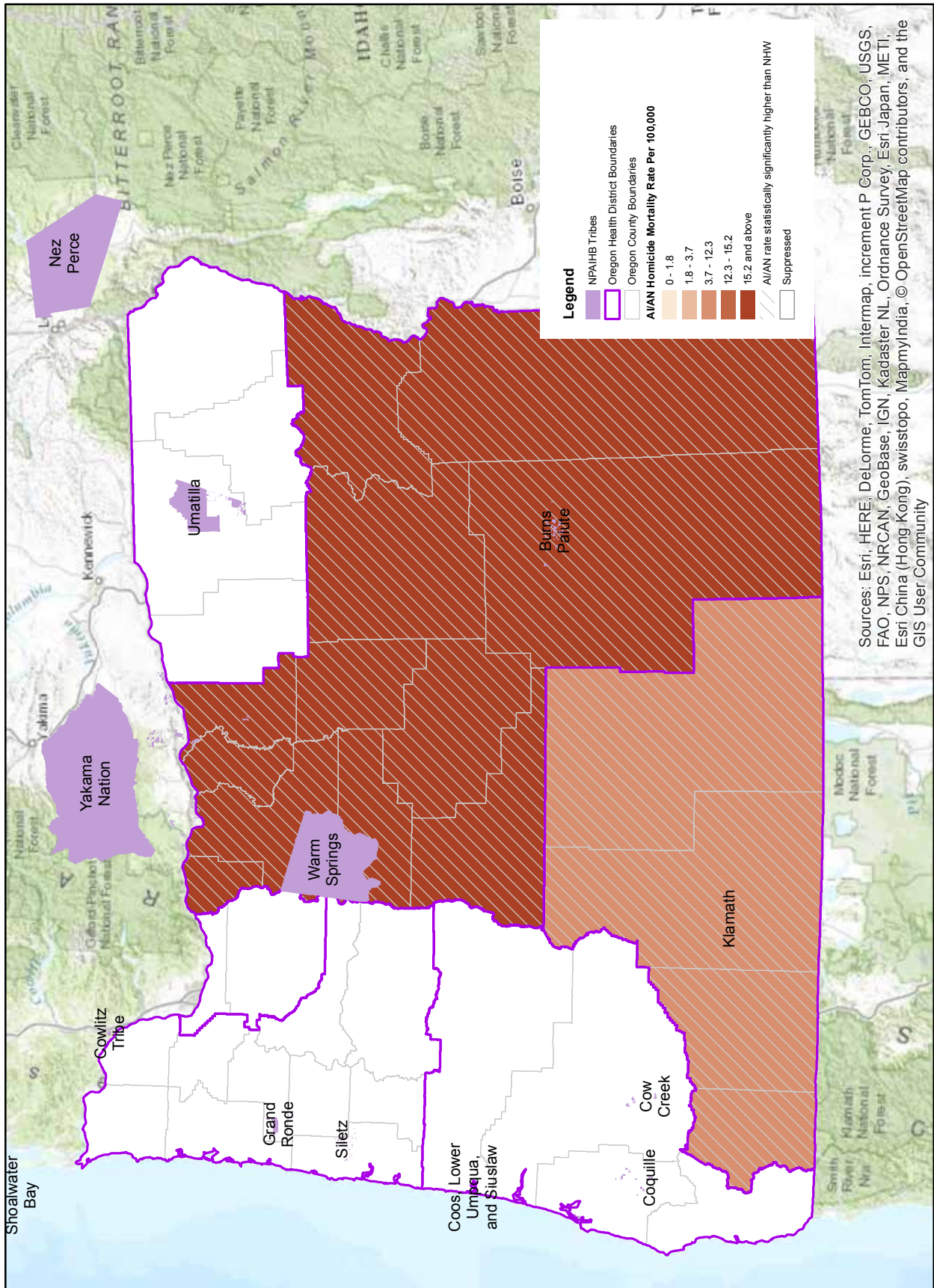
Sources: Esri, HERE, DeLorme, TomTom, Intermap, increment P Corp., GEBCO, USGS, FAO, NPS, NRCAN, GeoBase, IGN, Kadaster NL, Ordnance Survey, Esri Japan, METI, Esri China (Hong Kong), swisstopo, MapmyIndia, © OpenStreetMap contributors, and the GIS User Community

**Map 9: AI/AN age-adjusted motor vehicle crash (MVC) mortality rates by health district, Oregon, 2006-2010.**

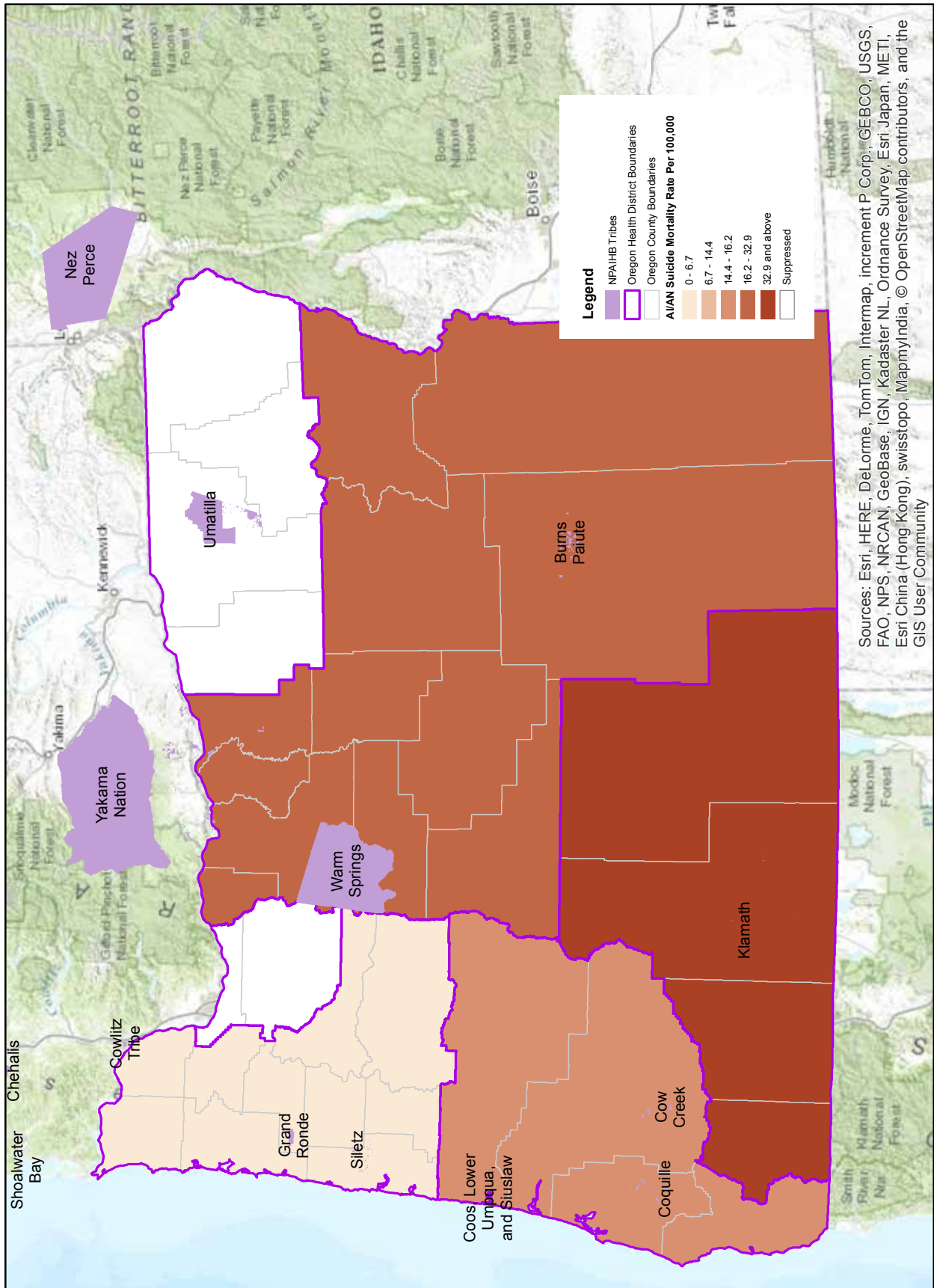


Sources: Esri, HERE, DeLorme, TomTom, Intermap, increment P Corp., GEBCO, USGS, FAO, NPS, NRCAN, GeoBase, IGN, Kadaster NL, Ordnance Survey, Esri Japan, METI, Esri China (Hong Kong), swisstopo, MapmyIndia, © OpenStreetMap contributors, and the GIS User Community

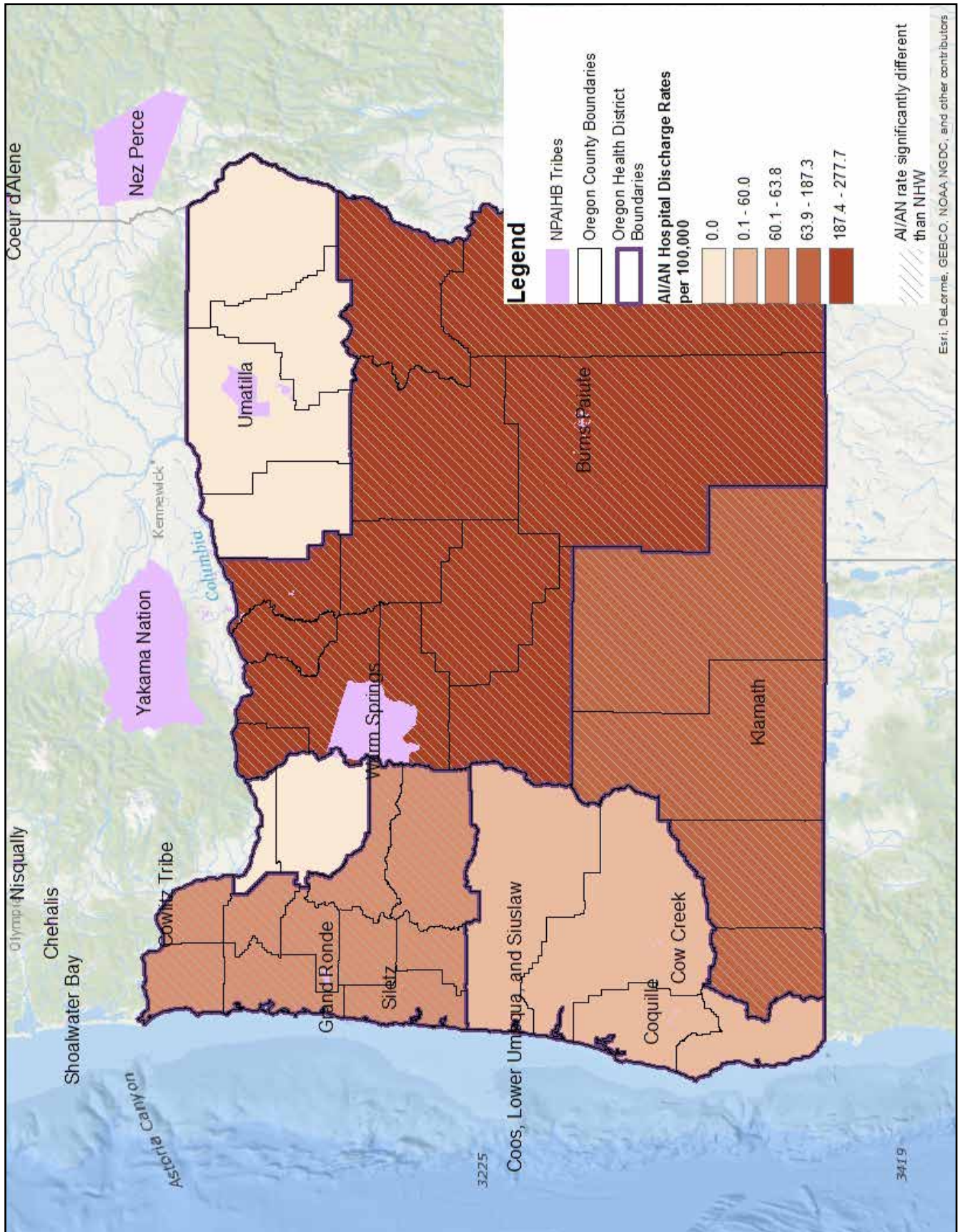
Map 10: AI/AN age-adjusted homicide mortality rates by health district, Oregon, 2006-2010.



Map 11: AI/AN age-adjusted suicide mortality rates by health district, Oregon, 2006-2010.



Map 12: AI/AN age-adjusted hospital discharge rates for alcohol and substance use disorders, by health district, Oregon, 2010-2011.



# Appendix II: Life Tables

**Abridged Life Tables for American Indians and Alaska Natives of Oregon, 2008-2010 (Both Sexes)**

Age Interval	Mortality rate per 1,000 for x to x+n	Probability of dying between ages x to x+n	Number surviving to age x	Number dying between ages x to x+n	Person-years lived between ages x to x+n	Total number of person-years lived above age x	Expectation of life at age x	Lower CI	Upper CI
x to x+n	m <sub>x</sub> /x	q <sub>x</sub> /x	l <sub>x</sub> /x	d <sub>x</sub> /x	L <sub>x</sub> /x	T <sub>x</sub> /x	e <sub>x</sub> /x		
Birth to 1 year	4.76	0.0036	100,000	355	99,718	7,476,847	74.77	74.06	75.48
1-4	0.50	0.0020	99,645	196	398,040	7,377,129	74.03	73.34	74.73
5-9	0.24	0.0012	99,449	117	496,813	6,979,089	70.18	69.49	70.87
10-14	0.09	0.0005	99,331	47	496,611	6,482,276	65.26	64.57	65.94
15-19	0.85	0.0042	99,285	419	495,650	5,985,665	60.29	59.60	60.97
20-24	1.22	0.0062	98,866	610	493,046	5,490,015	55.53	54.85	56.21
25-29	1.25	0.0062	98,255	610	489,391	4,996,969	50.86	50.19	51.52
30-34	1.47	0.0073	97,646	711	486,463	4,507,578	46.16	45.51	46.81
35-39	2.21	0.0110	96,935	1,066	481,881	4,021,115	41.48	40.84	42.12
40-44	3.08	0.0153	95,869	1,470	475,900	3,539,233	36.92	36.29	37.54
45-49	4.44	0.0221	94,399	2,088	467,283	3,063,333	32.45	31.84	33.06
50-54	7.79	0.0384	92,311	3,548	453,448	2,596,050	28.12	27.53	28.72
55-59	10.78	0.0522	88,763	4,635	431,782	2,142,602	24.14	23.57	24.71
60-64	14.44	0.0714	84,128	6,003	407,057	1,710,820	20.34	19.80	20.87
65-59	19.14	0.0921	78,125	7,194	373,521	1,303,763	16.69	16.18	17.19
70-74	36.95	0.1726	70,931	12,243	326,657	930,242	13.11	12.65	13.58
75-79	57.96	0.2544	58,688	14,932	257,680	603,585	10.28	9.89	10.68
80-84	89.13	0.3685	43,756	16,123	180,270	345,905	7.91	7.59	8.22
85+	166.83	1.0000	27,633	27,633	165,635	165,635	5.99	5.75	6.24

CI = 95% confidence interval

Note that age-specific mortality rates are based on small numerators in some cases, and are not recommended for use in analyses without standard errors.



**Abridged Life Tables for American Indians and Alaska Natives of Oregon 2008-2010 (Male)**

Age Interval	Mortality rate per 1,000 for x to x+n	Probability of dying between ages x to x+n	Number surviving to age x	Number dying between ages x to x+n	Person-years lived between ages x to x+n	Total number of person-years lived above age x	Expectation of life at age x	Lower CI	Upper CI
x to x+n	m <sub>x</sub>	q <sub>x</sub>	l <sub>x</sub>	d <sub>x</sub>	L <sub>x</sub>	T <sub>x</sub>	e <sub>x</sub>		
<b>Male AI/AN, Oregon</b>									
Birth to 1 year	6.52	0.004	100,000	355	99,718	7,301,225	73.01	72.05	73.97
1-4	0.60	0.002	99,645	235	397,906	7,201,507	72.27	71.34	73.20
5-9	0.29	0.001	99,410	140	496,516	6,803,601	68.44	67.52	69.36
10-14	0.09	0.000	99,270	47	496,327	6,307,085	63.53	62.62	64.45
15-19	1.29	0.006	99,223	623	495,288	5,810,758	58.56	57.65	59.47
20-24	1.88	0.009	98,600	925	490,975	5,315,470	53.91	53.02	54.80
25-29	1.36	0.007	97,675	661	486,375	4,824,495	49.39	48.53	50.26
30-34	2.06	0.010	97,014	995	482,419	4,338,121	44.72	43.87	45.57
35-39	2.66	0.013	96,019	1,277	476,899	3,855,701	40.16	39.33	40.98
40-44	3.14	0.016	94,741	1,493	470,360	3,378,802	35.66	34.86	36.47
45-49	4.16	0.021	93,249	1,950	461,201	2,908,443	31.19	30.41	31.97
50-54	8.59	0.043	91,299	3,882	448,210	2,447,242	26.80	26.05	27.56
55-59	13.24	0.064	87,417	5,577	422,085	1,999,031	22.87	22.15	23.59
60-64	15.33	0.076	81,840	6,218	395,994	1,576,947	19.27	18.60	19.94
65-59	21.45	0.103	75,621	7,806	360,671	1,180,953	15.62	15.00	16.24
70-74	39.33	0.187	67,816	12,678	311,741	820,282	12.10	11.54	12.65
75-79	68.30	0.307	55,138	16,902	239,702	508,541	9.22	8.76	9.69
80-84	103.45	0.425	38,236	16,246	154,177	268,839	7.03	6.67	7.39
85+	191.78	1.000	21,990	21,990	114,662	114,662	5.21	4.95	5.48

CI = 95% confidence interval

Note that age-specific mortality rates are based on small numerators in some cases, and are not recommended for use in analyses without standard errors.

**Abridged Life Tables for American Indians and Alaska Natives of Oregon 2008-2010 (Female)**

Age Interval	Mortality rate per 1,000 for x to x+n	Probability of dying between ages x to x+n	Number surviving to age x	Number dying between ages x to x+n	Person-years lived between ages x to x+n	Total number of person-years lived above age x	Expectation of life at age x	Lower CI	Upper CI
x to x+n	m <sub>x</sub> /l <sub>x</sub>	q <sub>x</sub> /l <sub>x</sub>	l <sub>x</sub>	d <sub>x</sub> /l <sub>x</sub>	L <sub>x</sub> /l <sub>x</sub>	T <sub>x</sub> /l <sub>x</sub>	e <sub>x</sub> /l <sub>x</sub>		
<b>Female AI/AN, Oregon</b>									
Birth to 1 year	2.92	0.004	100,000	355	99,718	7,651,272	76.51	75.48	77.55
1-4	0.38	0.002	99,645	155	398,185	7,551,554	75.78	74.77	76.80
5-9	0.20	0.001	99,490	94	497,124	7,153,369	71.90	70.89	72.91
10-14	0.09	0.000	99,395	46	496,909	6,656,245	66.97	65.96	67.97
15-19	0.38	0.002	99,350	196	496,014	6,159,337	62.00	60.99	63.00
20-24	0.51	0.003	99,154	263	495,279	5,663,322	57.12	56.12	58.11
25-29	1.13	0.006	98,891	556	492,690	5,168,043	52.26	51.27	53.25
30-34	0.82	0.004	98,335	407	490,848	4,675,353	47.55	46.57	48.52
35-39	1.71	0.009	97,928	851	487,234	4,184,504	42.73	41.76	43.70
40-44	3.01	0.015	97,077	1,455	481,830	3,697,271	38.09	37.14	39.04
45-49	4.70	0.023	95,622	2,210	473,751	3,215,440	33.63	32.70	34.55
50-54	7.06	0.035	93,413	3,233	459,112	2,741,689	29.35	28.45	30.25
55-59	8.46	0.042	90,180	3,771	441,671	2,282,577	25.31	24.45	26.18
60-64	13.55	0.066	86,409	5,723	418,142	1,840,906	21.30	20.47	22.14
65-59	16.86	0.080	80,686	6,484	386,771	1,422,764	17.63	16.85	18.42
70-74	34.68	0.160	74,202	11,871	342,245	1,035,993	13.96	13.24	14.69
75-79	49.08	0.216	62,331	13,494	275,463	693,748	11.13	10.50	11.76
80-84	78.46	0.329	48,837	16,084	204,080	418,284	8.56	8.04	9.09
85+	152.91	1.000	32,753	32,753	214,204	214,204	6.54	6.12	6.96

CI = 95% confidence interval

Note that age-specific mortality rates are based on small numerators in some cases, and are not recommended for use in analyses without standard errors.

# Appendix III: List of Figures and Tables

## Tables

### 1. Demographics

Table 1.1: Population by race and sex, Oregon, 2010.....	14
Table 1.2: Economic indicators by race, Oregon, 2006-2010.....	21

### 2. Maternal & Child Health

Table 2.1: Maternal risk factors by race, Oregon, 2008-2012.....	31
--	----

### 3. Mortality

Table 3.1: Top ten causes of death by race, Oregon, 2006-2010.....	39
--	----

### 4. Diabetes

Table 4.1: Inpatient hospital discharges for diabetes mellitus by race and sex, Oregon, 2010-2011.....	65
Table 4.2: Diabetes mortality rates by race and sex, Oregon, 2006-2010.....	67

### 5. Cardiovascular Disease & Stroke

Table 5.1: Inpatient hospital discharges for hypertension by race and sex, Oregon, 2010-2011.....	77
Table 5.2: Inpatient hospital discharges for heart disease by race and sex, Oregon, 2010-2011.....	79
Table 5.3: Inpatient hospital discharges for cerebrovascular disease by race and sex, Oregon, 2010-2011.....	81
Table 5.4: Age-adjusted heart disease mortality rates by race and sex, Oregon, 2006-2010.....	83
Table 5.5: Age-adjusted stroke mortality rates by race and sex, Oregon, 2006-2010.....	85

### 6. Cancer

Table 6.1: Leading cancer incidence sites for AI/AN by sex, Oregon, 2006-2010.....	97
Table 6.2: Cancer incidence rates by race and sex, Oregon, 2006-2010.....	99
Table 6.3: Leading cancer mortality sites for AI/AN by sex, Oregon, 2006-2010.....	105
Table 6.4: Cancer mortality rates by race and sex, Oregon, 2006-2010.....	107

### 7. Injury & Violence

Table 7.1: Inpatient hospital discharges for unintentional injury by race and sex, Oregon, 2010-2011.....	113
Table 7.2: Age-adjusted unintentional injury mortality rates by race and sex, Oregon, 2006-2010.....	115
Table 7.3: Inpatient hospital discharges for homicide by race and sex, Oregon, 2010-2011.....	121
Table 7.4: Age-adjusted homicide mortality rates by race and sex, Oregon, 2006-2010.....	123

### 8. Mental Health & Suicide

Table 8.1: Inpatient hospital discharges for mental health disorders by race and sex, Oregon, 2010-2011.....	137
Table 8.2: Inpatient hospital discharges for suicide by race and sex, Oregon, 2010-2011.....	139
Table 8.3: Age-adjusted suicide mortality rates by race and sex, Oregon, 2006-2010.....	141

### 9. Substance Abuse

Table 9.1: Inpatient hospital discharges for alcohol/substance abuse disorders by race and sex, Oregon, 2010-2011.....	153
Table 9.2: Age-adjusted accidental poisoning mortality rates by race and sex, Oregon, 2006-2010.....	155
Table 9.3: Types of drug and alcohol overdose deaths by race, Oregon, 2006-2010.....	157

### 11. Healthy Lifestyles, Healthy Environments

Table 11.1: Fish consumption advisories in Oregon, 2014.....	194
--	-----

### 12. Access to Care

Table 12.1: Health insurance coverage by race, Oregon, 2011-2013.....	194
---	-----

# Figures

## 1. Demographics

Figure 1.1: AI/AN population by county, Oregon, 2010.....	15
Figure 1.2: Age distribution by sex for AI/AN, Oregon, 2010.....	17
Figure 1.3: Age distribution by sex for NHW, Oregon, 2010.....	17
Figure 1.4: Educational attainment for adults by race and sex, Oregon, 2006-2010.....	19

## 2. Maternal & Child Health

Figure 2.1: Birth rates by age group and race, Oregon, 2008-2012.....	27
Figure 2.2: Infant mortality rates by race and infant's age at death, Oregon, 2008-2012.....	29
Figure 2.3: Birth weight by race, Oregon, 2008-2012.....	33
Figure 2.4: Premature births by race, Oregon, 2008-2012.....	33

## 3. Mortality

Figure 3.1: Top five age-adjusted mortality rates for AI/AN, Oregon, 2006-2010.....	41
Figure 3.2: AI/AN and NHW all-cause mortality rates, Oregon, 2006-2010.....	43
Figure 3.3: Life expectancy at birth by race and sex, Oregon, 2008-2010.....	45

## 4. Diabetes

Figure 4.1: Self-reported diabetes by race and sex, Oregon, 2006-2012.....	51
Figure 4.2: Diabetes prevalence among IHS patients, by area, 2009-2013.....	53
Figure 4.3: Percentage of IHS diabetes patients with ideal blood sugar control, 2009-2013.....	55
Figure 4.4: Percentage of IHS diabetes patients with ideal blood pressure, 2009-2013.....	57
Figure 4.5: Percentage of IHS diabetes patients who received an LDL assessment, 2009-2013.....	59
Figure 4.6: Percentage of IHS diabetes patients who received a nephropathy assessment, 2009-2013.....	61
Figure 4.7: Percentage of IHS diabetes patients who received a retinopathy assessment, 2009-2013.....	63
Figure 4.8: Age-adjusted hospital discharge rates for diabetes by race and sex, Oregon, 2010-2011.....	65
Figure 4.9: Age-adjusted diabetes mortality rates by race and sex, Oregon, 2006-2010.....	67

## 5. Cardiovascular Disease & Stroke

Figure 5.1: Prevalence of self-reported heart disease by race and sex, Oregon, 2006-2012.....	73
Figure 5.2: Percentage of IHS AI/AN patients (ages 22 years and older) with heart disease who received a comprehensive CVD assessment, 2009-2013.....	75
Figure 5.3: Age-adjusted hospital discharge rates for hypertension by race and sex, Oregon, 2010-2011.....	77
Figure 5.4: Age-adjusted hospital discharge rates for heart disease by race and sex, Oregon, 2010-2011.....	79
Figure 5.5: Age-adjusted hospital discharge rates for cerebrovascular disease by race and sex, Oregon, 2010-2011.....	81
Figure 5.6: Age-adjusted heart disease mortality rates by race and sex, Oregon, 2006-2010.....	83
Figure 5.7: Age-adjusted stroke mortality rates by race and sex, Oregon, 2006-2010.....	85

## 6. Cancer

Figure 6.1: Pap screening rates for IHS female patients, 2009-2013.....	91
Figure 6.2: Mammogram screening rates for IHS female patients, 2009-2013.....	93
Figure 6.3: Colorectal cancer screening rates for IHS patients, 2009-2013.....	95
Figure 6.4: Age-adjusted incidence rates for leading cancer sites by race, Oregon, 2006-2010.....	99
Figure 6.5: Age-adjusted cancer incidence rates, three year rolling averages, by race, Oregon, 1996-2011.....	101
Figure 6.6: Stage at diagnosis for incident cancer cases by race, Oregon, 2006-2011.....	103
Figure 6.7: Age-adjusted mortality rates for leading cancer sites by race, Oregon, 2006-2010.....	107

## 7. Injury & Violence

Figure 7.1: Age-adjusted hospital discharge rates for unintentional injury by race and sex, Oregon, 2010-2011.....	113
Figure 7.2: Age-adjusted unintentional mortality rates by race and sex, Oregon, 2006-2010.....	115
Figure 7.3: Age-specific unintentional injury death rates by race, Oregon, 2006-2010.....	117
Figure 7.3: Leading causes of unintentional injury mortality by race, Oregon, 2006-2010.....	119
Figure 7.4: Age-adjusted hospital discharge rates for homicide by race and sex, Oregon, 2010-2011.....	121
Figure 7.5: Age-adjusted homicide mortality rates by race and sex, Oregon, 2006-2010.....	123
Figure 7.6: Domestic violence screening rates for IHS female patients, 2009-2013.....	125

## 8. Mental Health & Suicide

Figure 8.1: Prevalence of self-reported depression or poor mental health in the past month by race and sex, Oregon, 2006-2012.....	131
Figure 8.2: Percentage of IHS AI/AN patients (ages 18 and older) who were screened for depression during the past year, 2009-2013.....	133
Figure 8.3: Prevalence of self-reported mental health treatment by race and sex, Oregon, 2006-2012.....	135
Figure 8.4: Age-adjusted hospital discharge rates for mental health disorders by race and sex, Oregon, 2010-2011.....	137
Figure 8.5: Age-adjusted hospital discharge rates for suicide by race and sex, Oregon, 2010-2011.....	139
Figure 8.6: Age-adjusted suicide mortality rates by race and sex, Oregon, 2006-2010.....	141
Figure 8.7: Age-specific suicide mortality rates by race, Oregon, 2006-2010.....	143

## 9. Substance Abuse

Figure 9.1: Prevalence of self-reported alcohol consumption by race and sex, Oregon, 2006-2012.....	149
Figure 9.2: Prevalence of self-reported binge drinking by race and sex, Oregon, 2006-2012.....	151
Figure 9.3: Age-adjusted hospital discharge rates for alcohol and substance abuse disorders by race and sex, Oregon, 2010-2011.....	153
Figure 9.4: Age-adjusted accidental poisoning mortality rates by race and sex, Oregon, 2006-2010.....	155

## 10. Communicable Diseases

Figure 10.1: Chlamydia diagnosis rates by race and sex, Oregon, 2000-2012.....	163
Figure 10.2: Gonorrhea diagnosis rates, three year rolling averages, by race and sex, Oregon, 2000-2012.....	165
Figure 10.3: HIV screening rates for pregnant AI/AN women seen at IHS facilities, by area, 2009-2013.....	167
Figure 10.4: Rates of HIV diagnoses (2008-2011) and AIDS deaths (2006-2010) by race, Oregon.....	169

## 11. Healthy Lifestyles, Healthy Environments

Figure 11.1: Body mass index (BMI) by race and sex, Oregon, 2006-2012.....	175
Figure 11.2: Percentage of IHS patients ages 2-5 considered overweight by area, 2009-2013.....	177
Figure 11.3: Percentage of population who exercised in the past month, by race and sex, Oregon, 2006-2012.....	179
Figure 11.4: Daily fruit and vegetable consumption by race, Oregon, 2007-2011.....	181
Figure 11.5: Self-reported seatbelt use by race and sex, Oregon, 2006-2012.....	183
Figure 11.6: Smoking status by race and sex, Oregon, 2006-2012.....	185
Figure 11.7: Lifetime asthma prevalence by race and sex, Oregon, 2006-2012.....	187
Figure 11.8: Tobacco cessation counselling rates for IHS patients, 2009-2013.....	189
Figure 11.9: Air quality non-attainment and maintenance areas in Oregon.....	191
Figure 11.10: Map of fish consumption advisories in Oregon.....	193

## 12. Access to Care

Figure 12.1: Percentage of population without health insurance by race and sex, Oregon, 2006-2012.....	201
Figure 12.2: Percentage of population with a primary care provider by race and sex, Oregon, 2006-2012.....	203
Figure 12.3: Time since last dental visit by race and sex, Oregon, 2006-2012.....	205
Figure 12.4: Percentage of IHS AI/AN patients who had a dental visit in the past year, by area, 2009-2013.....	207
Figure 12.5: Percentage of IHS AI/AN children who received the 4:3:1:3:3:1:4 immunization schedule, by area, 2009-2013.....	209
Figure 12.6: Percentage of IHS AI/AN patients (65 years & older) who received flu shot in the past year, by area, 2009-2013.....	211
Figure 12.7: Percentage of IHS AI/AN patients (65 years & older) who ever received a pneumococcal vaccine, by area, 2009-2013.....	213

## Appendix I: Maps

Map 1: AI/AN age-adjusted hospital discharge rates by health district, Oregon, 2010-2011.....	218
Map 2: AI/AN age-adjusted all cause mortality rates by health district, Oregon, 2006-2010.....	219
Map 3: AI/AN age-adjusted diabetes hospital discharge rates by health district, Oregon, 2010-2011.....	220
Map 4: AI/AN age-adjusted diabetes mortality rates by health district, Oregon, 2006-2010.....	221
Map 5: AI/AN age-adjusted heart disease hospital discharge rates by health district, Oregon, 2010-2011.....	222
Map 6: AI/AN age-adjusted heart disease mortality rates by health district, Oregon, 2006-2010.....	223
Map 7: AI/AN age-adjusted unintentional injury hospital discharge rates by health district, Oregon, 2010-2011.....	224
Map 8: AI/AN age-adjusted unintentional injury mortality rates by health district, Oregon, 2006-2010.....	225
Map 9: AI/AN age-adjusted motor vehicle crash (MVC) mortality rates by health district, Oregon, 2006-2010.....	226
Map 10: AI/AN age-adjusted homicide mortality rates by health district, Oregon, 2006-2010.....	227
Map 11: AI/AN age-adjusted suicide mortality rates by health district, Oregon, 2006-2010.....	228
Map 12: AI/AN age-adjusted hospital discharge rates for alcohol and substance use disorders, by health district, Oregon, 2010-2011.....	229

## Photo Credits

Acknowledgements page: Kathleen Franklin, [Nez Perce Hands](#). [CC BY 2.0](#)

Demographics title page: Kathleen Franklin, [Native American](#). [CC BY 2.0](#)

Mortality title page:

National Forest Service, Northern Region, [Bridge, Nez Perce National Forest](#). [CC BY 2.0](#)

Jeff Few, [Indian Days Sunset](#). [CC BY-NC-ND 2.0](#)

Diabetes title page:

Srimesh, [Silver Buffaloberry](#). [CC SA 3.0](#)

William & Wilma Follette, [Cassamia-Quamash](#). [CC BY 2.5](#)

OCVA, [Native American Salmon Bake](#). [CC BY-ND 2.0](#)

Cardiovascular Disease & Stroke title page:

April Westervelt, [Indian Horse Race, Pendleton Round Up](#), [CC BY-NC-SA 2.0](#)

Denny Nkemonto, [Siletz Pow Wow](#), [CC BY-NC-SA 2.0](#)

Alyssa Macy Spilyay Tymoo, [Warm Springs K-8 Academy](#), [CC BY-NC-ND 2.0](#)

Cancer title page:

Iwona Kellie, [Crater Lake](#), [CC-BY-NC-SA 2.0](#)

John Bruckman, [Bison](#). [CC BY-ND 2.0](#)

Gary Windust, [Siletz Bay](#), [CC BY-ND 2.0](#)

Mental Health & Suicide title page:

Holly Hayes, [Crater Lake](#), [CC BY-NC 2.0](#)

Joe Duty, [Pendleton Round Up](#), [CC BY-NC-SA 2.0](#)

Mary Harrsch, [Native American Tee Pee Encampment, Pendleton Round Up](#), [CC BY-NC-SA 2.0](#)

Substance Abuse title page:

Brewbooks, [Lewisia rediviva on Tronsen Ridge](#) (bitter root). [CC BY-SA 2.0](#)

Nomadic Lass, [Peaceful Once More](#). [CC BY-SA 2.0](#)

Tim Vo, [Crater Lake on Garfield Peak Trail](#), [CC BY-NC-ND 2.0](#)

Communicable Diseases title page:

Rihannon Boyle, [Warm Springs](#), [CC BY-NC-ND 2.0](#)

Alan Vernon, [Juvenile Elk Calf](#). [CC BY-NC-SA 2.0](#)

Beau Rogers, [Dusk at Coquille River Lighthouse](#), [CC BY-NC 2.0](#)

Healthy Lifestyles title page:

Mooch Cassidy, [Warm Springs Central Oregon](#), [CC BY-NC-ND 2.0](#)

Madeleine Holland, [Epically Blue Crater Lake](#), [CC BY 2.0](#)

Sarah Mirk, [Indian Village, Pendleton Round Up](#), [CC BY 2.0](#)

Access to Care title page:

Bob Thomas, [Native American Dance, Portland, Oregon](#), [CC BY-NC-SA 2.0](#)

Michael McCollough, [Welcome to Chiloquin](#), [CC-BY-2.0](#)

Mrs. Parks, [Inside the Tee Pee Kahneeta](#), [CC BY-SA 2.0](#)





# Community Health Profile Feedback Questionnaire

We hope you found this report useful, but we know it isn't perfect! Your feedback is important to make sure future versions better meet your community's needs. Please take a moment to complete the following questionnaire. If you prefer, you can also complete the same survey online at [www.surveymonkey.com/s/D38NS9G](http://www.surveymonkey.com/s/D38NS9G)

To return the form you can mail it to NPAIHB at 2121 SW Broadway, Suite 300 Portland OR 97201. You can also fax it to 503-416-3265 or scan and email to [ideanw@npaihb.org](mailto:ideanw@npaihb.org)

Q1. How did you receive this report?

- Hard copy mailed or given to me from NPAIHB
- Hard copy given to me by someone else
- Electronic copy emailed directly to me from NPAIHB
- Electronic copy forwarded to me from someone else
- Downloaded from NPAIHB website
- Other (please specify): \_\_\_\_\_

Q2. Which best describes your position or role?

- Tribal council member or other tribal leader
- Tribal health director
- Clinic staff
- Grant writer
- Researcher
- Other (please specify): \_\_\_\_\_

Q3. Overall, how useful did you find this report?

- Not at all useful
- Somewhat useful
- Very useful
- Extremely useful

Q4. Which section did you find **the most** useful?

- Demographics
- Maternal & Child Health
- Mortality
- Diabetes
- Cardiovascular Disease & Stroke
- Cancer
- Injury & Violence
- Mental Health & Suicide
- Substance Abuse
- Communicable Diseases
- Healthy Lifestyles, Healthy Environments
- Access to Care

Q5. How easy or difficult was it for you to understand this report?

- Extremely difficult to understand
- Somewhat difficult to understand
- Somewhat easy to understand
- Extremely easy to understand

Q6. What would have made it easier to understand?

---

---

---

Q7. How will you use the information in this report?

- Grants
- Program planning
- Financial allocation planning
- Presentations
- Manuscripts
- Advocacy
- Not sure
- Other (please specify): \_\_\_\_\_

Q8. Do you have any other comments or questions?

---

---

---

If you would like a staff person to respond to your questions or comments, please share your contact information below:

Name \_\_\_\_\_

Job Position \_\_\_\_\_

Address \_\_\_\_\_

\_\_\_\_\_

Email \_\_\_\_\_

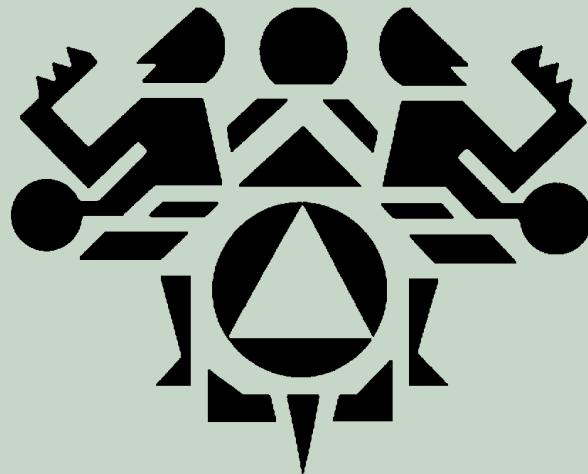
Phone \_\_\_\_\_ Fax \_\_\_\_\_

Do you prefer to be contacted by  Email or  Phone

*Thank you for your feedback!*







**Northwest Tribal Epidemiology Center  
Northwest Portland Area Indian Health Board**

2121 SW Broadway, Suite 300

Portland, OR 97201

PH 503-228-4185 • FX 503-228-8182 • [www.npaihb.org](http://www.npaihb.org)