

# NPAIHB Weekly Update

August 13, 2024

Please sign in using the chat box:

Enter the tribe or organization you are representing  
and names of all people participating with you today



NORTHWEST PORTLAND AREA  
INDIAN HEALTH BOARD  
*Indian Leadership for Indian Health*

# Information for Today's Call

## Agenda

- Welcome & Introduction: Bridget Canniff
- Upcoming Indian Country ECHO Sessions
- Upcoming NPAIHB Weekly Update Sessions
- Upcoming NPAIHB Events & Resources
- Tribal Public Health Workforce: Bridget Canniff
- IHS & State Partner Updates
- Questions & Comments

## Guidelines

- Please place yourself on mute unless speaking
- Sign in, using chat box, with your tribe/organization and names of all participants
- Use the chat box for questions, for Q&A after updates and announcements



# Upcoming Indian Country ECHO Telehealth Opportunities

- **NW Elders, Knowledge Holders and Culture Keepers ECHO** – 2<sup>nd</sup> Tuesday of every month at 12pm PT
  - Tuesday, August 13<sup>th</sup> 12pm PT
  - Didactic Topic: *Acudetox: Honoring the Spirit of NADA*
  - To learn more and join: <https://www.indiancountryecho.org/program/nw-elders-knowledge-holders-and-culture-keepers/>
- **Infectious Disease ECHO** – 3<sup>rd</sup> Thursday of every month at 11am PT
  - Thursday, August 15<sup>th</sup> at 11am PT
  - Didactic Topic: *IHS/CDC Collaborations on Pulmonary Fungal Diseases*
  - To learn more and join: <https://www.indiancountryecho.org/program/infectious-disease/>
- **EMS ECHO** - 1<sup>st</sup> Tuesday & 3<sup>rd</sup> Thursday of every month at 5pm PT
  - Thursday, August 15<sup>th</sup> at 5pm PT
  - Didactic Topic: *Head and Spinal Injuries*
  - To learn more and join: <https://www.indiancountryecho.org/program/emergency-medical-services-echo/>

# Upcoming Indian Country ECHO Telehealth Opportunities

- **emRIC ECHO**
  - Monday, August 19<sup>th</sup> at 8:30 am PT
  - Didactic Topic: *Suicide Assessment in the ED*
  - To learn more and join: <https://www.indiancountryecho.org/program/emergency-medicine-echo-program/>
- **Cardiology ECHO** – 3<sup>rd</sup> Monday of every month at 11am PT
  - Monday, August 19<sup>th</sup> at 11am PT
  - Didactic Topic: *Atrial Fibrillation Diagnosis and Management with the Newest Guidelines*
  - To learn more and join: <https://www.indiancountryecho.org/program/cardiology-echo-program/>
- **Community Health Representative (CHR) ECHO** – 3<sup>rd</sup> Monday of every month at 12:00pm PT
  - Monday, August 19<sup>th</sup> at 12:00pm PT
  - Didactic Topic: *Home Visiting*
  - To learn more and join: <https://www.indiancountryecho.org/program/community-health-series/>

# Weekly Update Schedule Preview: August

**August 20:** NWTEC Update: TBA

**August 27:** Legislative & Policy Update

**September TBA:** NWTEC Update New Tribal Memoranda of Agreement for Data Sharing  
(rescheduled from August 20)



NORTHWEST PORTLAND AREA  
INDIAN HEALTH BOARD  
*Indian Leadership for Indian Health*

Visit [www.npaihb.org/weeklyupdate](http://www.npaihb.org/weeklyupdate) for upcoming topics, past presentations, and more!

# Upcoming NPAIHB Events

## 2nd Annual NW Tribal Brain Health & Dementia Summit

August 21-22

Embassy Suites PDX Airport, Portland, OR

*Registration closes TODAY, August 13*

Register at:

<https://www.surveymonkey.com/r/LTVHSVK>



NPAIHB Events Calendar: <https://www.npaihb.org/npaihb-events/>



### 2024 NORTHWEST TRIBAL BRAIN HEALTH & DEMENTIA SUMMIT

WEAVING TOGETHER CULTURE, WISDOM, & RESEARCH

**Presentations By:**  
NW Tribal Elders Panel



**Speakers:**

- Dr. Turner Goins**  
SPEAKER  
PhD, Western Carolina University
- Dr. R. Kim Hartwig**  
SPEAKER  
MD, Medical Health Director, NIMiPuu Health
- Dr. J Neil Henderson**  
SPEAKER  
PhD, University of Minnesota
- Dr. Jordan Lewis**  
SPEAKER  
PhD, University of Alaska Fairbanks
- Dr. Will Mantyh**  
SPEAKER  
MD, University of Minnesota

**About:** The Northwest Tribal Brain Health and Dementia Summit is a space where there will be presentations that include information, education, awareness, and current research to address brain health, Alzheimer's, related dementias and memory/cognitive decline in Indian Country

[Visit our website](#)  
[August 21st & 22nd 2024](#)  
[Embassy Suite, By Hilton, PDX Airport](#)  
[Book your stay here](#)

Register now at : [2024 NW Dementia Summit](#)

**Vendor / Exhibitor Registration:**  
[Vendors register here](#)



This flyer and webinar/meeting is supported by the Centers for Disease Control and Prevention of the U.S. Department of Health and Human Services (HHS) as part of a financial assistance award totaling \$900,000 with 100 percent funded by CDC/HHS. The contents are those of the author(s) and do not necessarily represent the official views of, nor an endorsement, by CDC/HHS, or the U.S. Government.

# Upcoming NPAIHB Events

## Native Fitness XVIII

August 21-22

Providence Park, Portland, OR

Email [wtdp@npaihb.org](mailto:wtdp@npaihb.org) for more info

Register at:

[https://www.surveymonkey.com/r/NF18\\_2024](https://www.surveymonkey.com/r/NF18_2024)



NORTHWEST PORTLAND AREA  
INDIAN HEALTH BOARD  
*Indian Leadership for Indian Health*

NPAIHB Events Calendar: <https://www.npaihb.org/npaihb-events/>



**REGISTRATION OPENING SOON!**

## NATIVE FITNESS XVIII

**AUGUST 21<sup>ST</sup> & 22<sup>ND</sup>, 2024**

### SAVE THE DATE

**WHO SHOULD ATTEND?**

- DIABETES COORDINATORS
- TRIBAL FITNESS COORDINATORS
- COMMUNITY WELLNESS TRAINERS
- YOUTH COORDINATORS
- TRIBAL LEADERS

**WHY SHOULD YOU ATTEND?**

- RECEIVE SKILLS IN BASIC AEROBIC TRAINING
- LEARN CREATIVE FITNESS TRAINING TECHNIQUES
- LEARN TRIBAL SPECIFIC APPROACHES TO HEALTH & WELLNESS
- CERTIFICATE OF COMPLETION (UPON REQUEST)

 **Native American Fitness Council**

 **PROVIDENCE PARK**

 **NPAIHB**  
*Indian Leadership for Indian Health*

For more information:  
Western Tribal Diabetes Project  
[wtdp@npaihb.org](mailto:wtdp@npaihb.org)

# Upcoming NPAIHB Events

## Northwest Tribal Food Sovereignty Gathering

September 3-5

Heritage University, Toppenish, WA

Register at:

<https://lil.ms/ombw>



**Northwest Tribal  
Food Sovereignty  
Coalition Annual  
Gathering**

 **Location:** Heritage University, 3240 Fort Rd, Toppenish, WA 98948

 **Date and time:** Tue, Sep 3, 2024 5:00 PM - Thu, Sep 5, 2024 5:00 PM

Join us for two days filled with inspiring knowledge keepers, tasty foods, and community building at Heritage University.



**Register now here:** <http://lil.ms/ombw>



NORTHWEST PORTLAND AREA  
INDIAN HEALTH BOARD  
*Indian Leadership for Indian Health*

NPAIHB Events Calendar: <https://www.npaihb.org/npaihb-events/>



# Tribal Public Health Workforce Development

Bridget Canniff



NORTHWEST PORTLAND AREA  
INDIAN HEALTH BOARD  
*Indian Leadership for Indian Health*

# What is Public Health?

## **PUBLIC HEALTH CONNECTS US ALL**

Public health is the science of protecting and improving the health of people and their communities. This work is achieved by promoting healthy lifestyles, researching disease and injury prevention, and detecting, preventing and responding to infectious diseases. Overall, public health is concerned with protecting the health of entire populations. These populations can be as small as a local neighborhood, or as big as an entire country or region of the world.



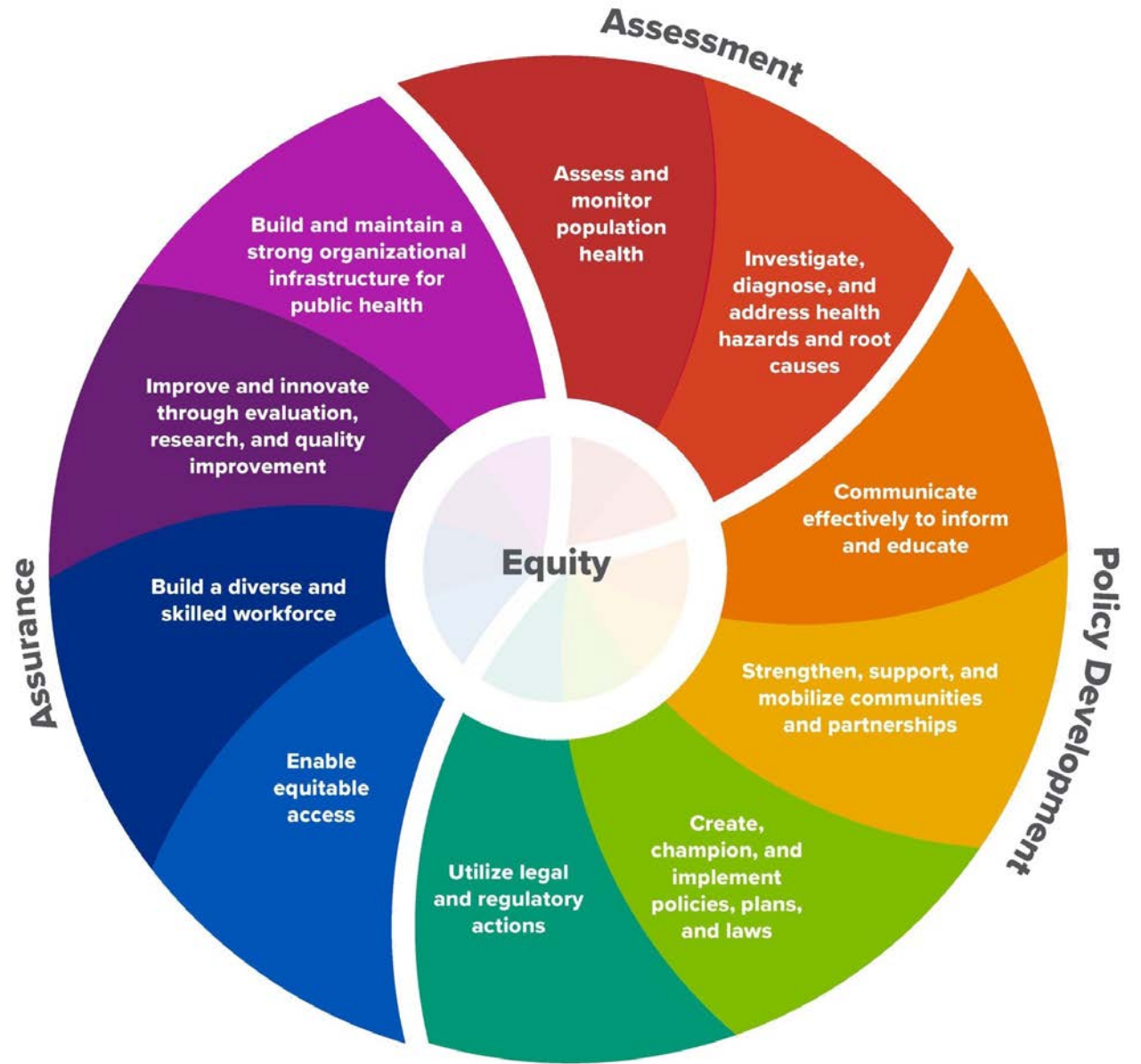
# Why is Public Health Important?

## WHY IS PUBLIC HEALTH IMPORTANT?

Public health professionals try to prevent problems from happening or recurring through implementing educational programs, recommending policies, administering services and conducting research—in contrast to clinical professionals like doctors and nurses, who focus primarily on treating individuals after they become sick or injured. Public health also works to limit health disparities. A large part of public health is promoting health care equity, quality and accessibility.



# 10 Essential Public Health Services



NORTHWEST PORTLAND AREA  
INDIAN HEALTH BOARD  
*Indian Leadership for Indian Health*

Source: <https://phaboard.org/wp-content/uploads/EPHS-English.pdf>

# Core Competencies for Public Health Professionals

Data Analytics & Assessment Skills

Community Partnership Skills

Policy Development & Program Planning Skills

Public Health Sciences Skills

Communication Skills

Management & Finance Skills

Health Equity Skills

Leadership & Systems Thinking Skills



# Core Competencies for Public Health Professionals

For each domain:

- **3 Competency Tiers:**

- Front Line & Program Support Responsibilities
- Program Management & Supervisory Responsibilities
- Senior Management & Executive Leadership Responsibilities

- **Competency Statements**

- **Subcompetencies**

- **Examples**

Source: [https://www.phf.org/resourcestools/Documents/Core\\_Compencies\\_for\\_Public\\_Health\\_Professionals\\_2021October.pdf](https://www.phf.org/resourcestools/Documents/Core_Compencies_for_Public_Health_Professionals_2021October.pdf)



NORTHWEST PORTLAND AREA  
INDIAN HEALTH BOARD  
*Indian Leadership for Indian Health*

# Data Analytics & Assessment

## Domain 1: Data Analytics and Assessment Skills

- 1.1. Describes factors that affect the health of a community
- 1.2. Accesses existing quantitative and qualitative data
- 1.3. Collects quantitative and qualitative data
- 1.4. Analyzes quantitative and qualitative data
- 1.5. Manages quantitative and qualitative data
- 1.6. Uses quantitative and qualitative data
- 1.7. Applies public health informatics in using data, information, and knowledge
- 1.8. Assesses community health status



# Policy Development and Program Planning

Domain 2: Policy Development and Program Planning Skills	
2.1.	Develops policies, programs, and services
2.2.	Implements policies, programs, and services
2.3.	Evaluates policies, programs, services, and organizational performance
2.4.	Improves policies, programs, services, and organizational performance
2.5.	Influences policies, programs, and services external to the organization
2.6.	Engages in organizational strategic planning
2.7.	Engages in community health improvement planning





# Communication

Domain 3: Communication Skills	
3.1.	Determines communication strategies
3.2.	Communicates with internal and external audiences
3.3.	Responds to information, misinformation, and disinformation
3.4.	Facilitates communication among individuals, groups, and organizations



# Health Equity

## Domain 4: Health Equity Skills

- |   |
|---|
| 4.1. Applies principles of ethics, diversity, equity, inclusion, and justice  |
| 4.2. Engages in continuous self-reflection about one's biases   |
| 4.3. Recognizes the diversity of individuals and populations  |
| 4.4. Reduces systemic and structural barriers that perpetuate health inequities   |
| 4.5. Implements organizational policies, programs, and services to achieve health equity and social and environmental justice |
| 4.6. Contributes to achieving and sustaining a diverse, inclusive, and competent public health workforce                      |
| 4.7. Advocates for health equity and social and environmental justice   |



# Community Partnership

## Domain 5: Community Partnership Skills

- |      |   |
|------|---|
| 5.1. | Describes conditions, systems, and policies affecting community health and resilience |
| 5.2. | Establishes relationships to improve community health and resilience                  |
| 5.3. | Maintains relationships that improve community health and resilience                  |
| 5.4. | Collaborates with community members and organizations                                 |
| 5.5. | Shares power and ownership with community members and others                          |



# Public Health Sciences

## Domain 6: Public Health Sciences Skills

- |  |
|--|
| 6.1. Describes systems, policies, and events impacting public health                                       |
| 6.2. Applies public health sciences in delivering the 10 Essential Public Health Services                  |
| 6.3. Uses evidence in developing, implementing, evaluating, and improving policies, programs, and services |
| 6.4. Contributes to the evidence base for improving health   |



# Management & Finance

Domain 7: Management and Finance Skills	
7.1.	Describes factors that affect the health of an organization
7.2.	Secures human resources
7.3.	Manages human resources
7.4.	Engages in professional development
7.5.	Secures financial resources
7.6.	Manages financial resources
7.7.	Implements organizational policies, programs, and services to achieve diversity, equity, inclusion, and justice
7.8.	Manages programs and services
7.9.	Engages in contingency planning
7.10.	Applies critical thinking in decision making
7.11.	Engages individuals and teams to achieve program and organizational goals
7.12.	Facilitates collaboration among individuals, groups, and organizations
7.13.	Engages in performance management



# Leadership & Systems Thinking

## Domain 8: Leadership and Systems Thinking Skills

- |  |
|--|
| 8.1. Creates opportunities to achieve cross-sector alignment   |
| 8.2. Implements a vision for a healthy community   |
| 8.3. Addresses facilitators and barriers impacting delivery of the 10 Essential Public Health Services |
| 8.4. Creates opportunities for creativity and innovation   |
| 8.5. Responds to emerging needs  |
| 8.6. Manages organizational change   |
| 8.7. Engages politicians, policymakers, and the public to support public health infrastructure         |
| 8.8. Advocates for public health   |



# Tiers & Subcompetencies

Domain 1: Data Analytics and Assessment Skills		
<b>1.1. Describes factors that affect the health of a community (e.g., income, education, laws, environment, climate change, resilience, homelessness, food security, access to healthcare, racial equity, distribution of resources and power, social and community engagement, changing demographics)</b>		
<i>Tier 1 Subcompetencies:</i>	<i>Tier 2 Subcompetencies:</i>	<i>Tier 3 Subcompetencies:</i>
T1: 1.1.1. Identifies factors affecting the health of a community	T2: 1.1.1. Identifies factors affecting the health of a community	T3: 1.1.1. Identifies factors affecting the health of a community
T1: 1.1.2. Describes factors affecting the health of a community	T2: 1.1.2. Describes factors affecting the health of a community	T3: 1.1.2. Describes factors affecting the health of a community
<b>1.2. Accesses existing quantitative and qualitative data (e.g., community input, big data, vital statistics, electronic health records, transportation patterns, employment statistics, environmental monitoring, health equity impact assessments, revenue and expenditures)</b>		
<i>Tier 1 Subcompetencies:</i>	<i>Tier 2 Subcompetencies:</i>	<i>Tier 3 Subcompetencies:</i>
T1: 1.2.1. Identifies data needs (e.g., sub-county, real-time, trends, race and ethnicity, social determinants of health, surrounding jurisdictions, comparable jurisdictions for comparative purposes)	T2: 1.2.1. Determines data needs (e.g., sub-county, real-time, trends, race and ethnicity, social determinants of health, surrounding jurisdictions, comparable jurisdictions for comparative purposes)	T3: 1.2.1. Determines data needs (e.g., sub-county, real-time, trends, race and ethnicity, social determinants of health, surrounding jurisdictions, comparable jurisdictions for comparative purposes)
T1: 1.2.2. Identifies sources of existing data (e.g., what is available, what is accessible, how to access)	T2: 1.2.2. Determines sources of existing data (e.g., what is available, what is accessible, how to access)	T3: 1.2.2. Determines sources of existing data (e.g., what is available, what is accessible, how to access)



# NIHB Public Health Indian Country Capacity Scan (PHICCS)

- Conducted every 3 years by the National Indian Health Board (NIHB)
- Assesses the capacity of Tribal health and Tribal public health organizations for delivering public health services
- Helps Tribes, Tribal organizations, partners, and policymakers better understand Tribal public health infrastructure and plan for future improvements
- Last report released in 2019
- Last PHICCS completed in 2023





# Tribal PH Workforce Positions

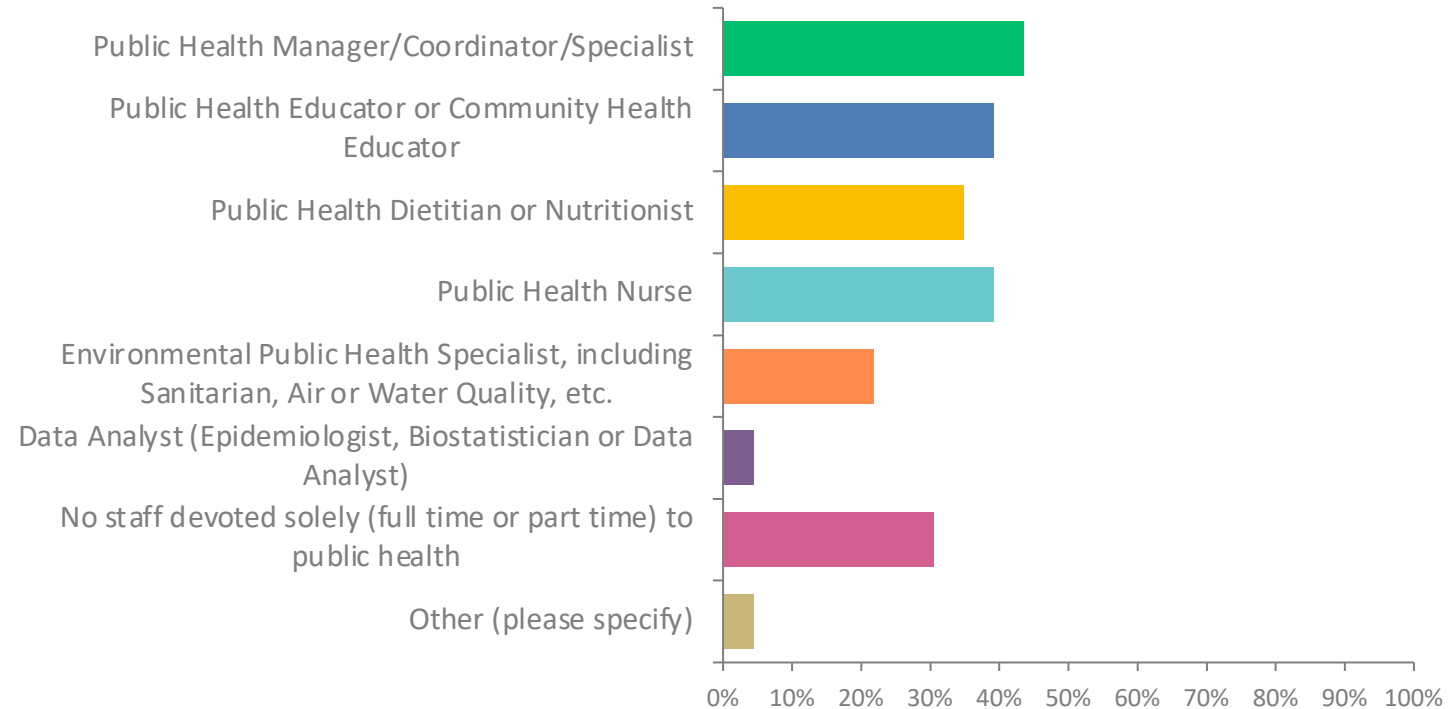
- Agency Leadership/Upper Management
- Behavioral Health Staff
- Business & Financial Operations
- Community Health Aides (CHAs)
- Community Health Representatives (CHRs)
- Environmental Health Workers
- Epidemiologist/Statistician
- IT
- Laboratory Worker
- Legal Counsel
- Nurse Practitioner
- Nutritionist
- Occupational Therapist
- Office & Administrative Support
- Oral Health Professional
- Physician Assistant
- Preparedness Staff
- Public Health Educator
- Public Health Informatics Specialist
- Public Health Information Specialist
- Public Health Nurse
- Public Health Physician
- Quality Improvement Professional
- Workforce Development Coordinator
- Other (e.g. traditional healers, transportation support staff/drivers, substance abuse counselors, diabetes educators)



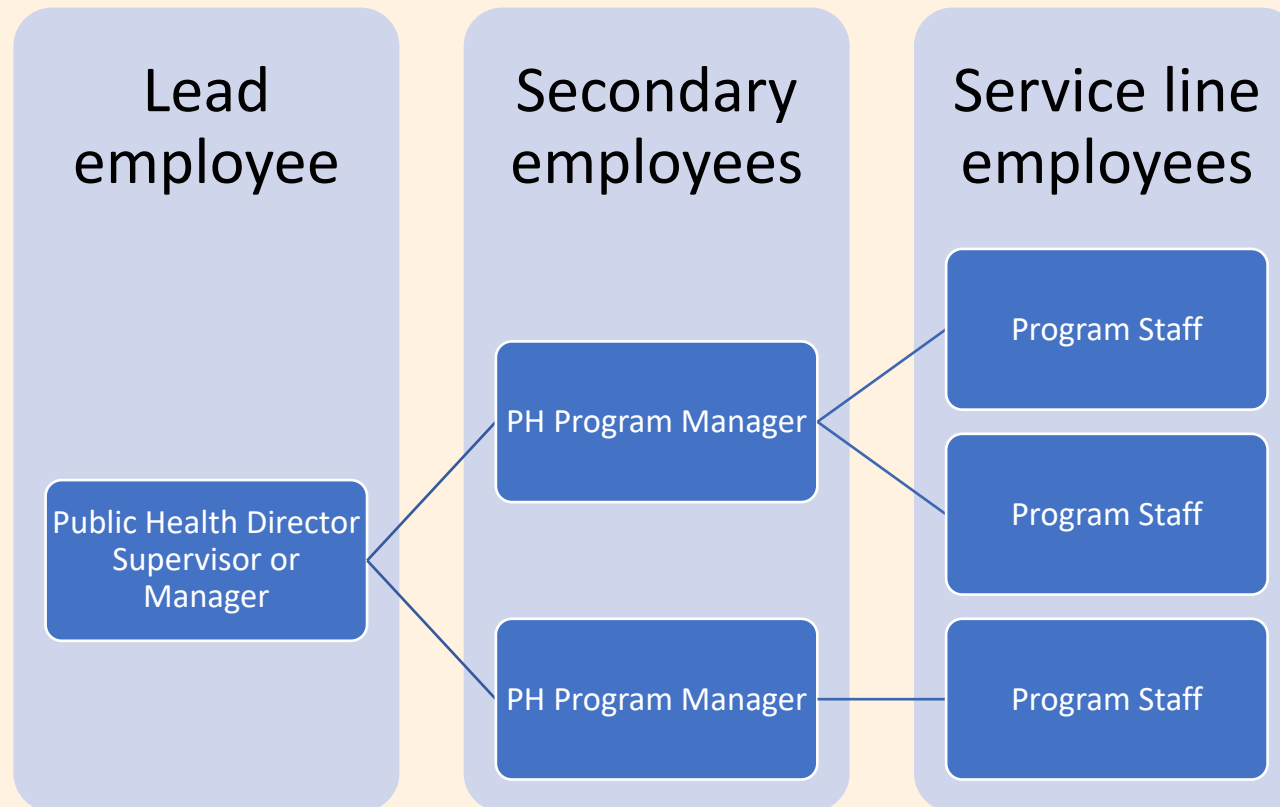
# NWTEC 2024 Tribal Leaders' Priorities Survey

**What public health staff (full-time or part-time) does your tribe have, either as an employee or as a contractor? Choose all that apply.**

Answered: 23 Skipped: 1



# PH Workforce Structure Depends on Size, Defined Needs, and Funding



# Tribal PH Workforce Development Needs

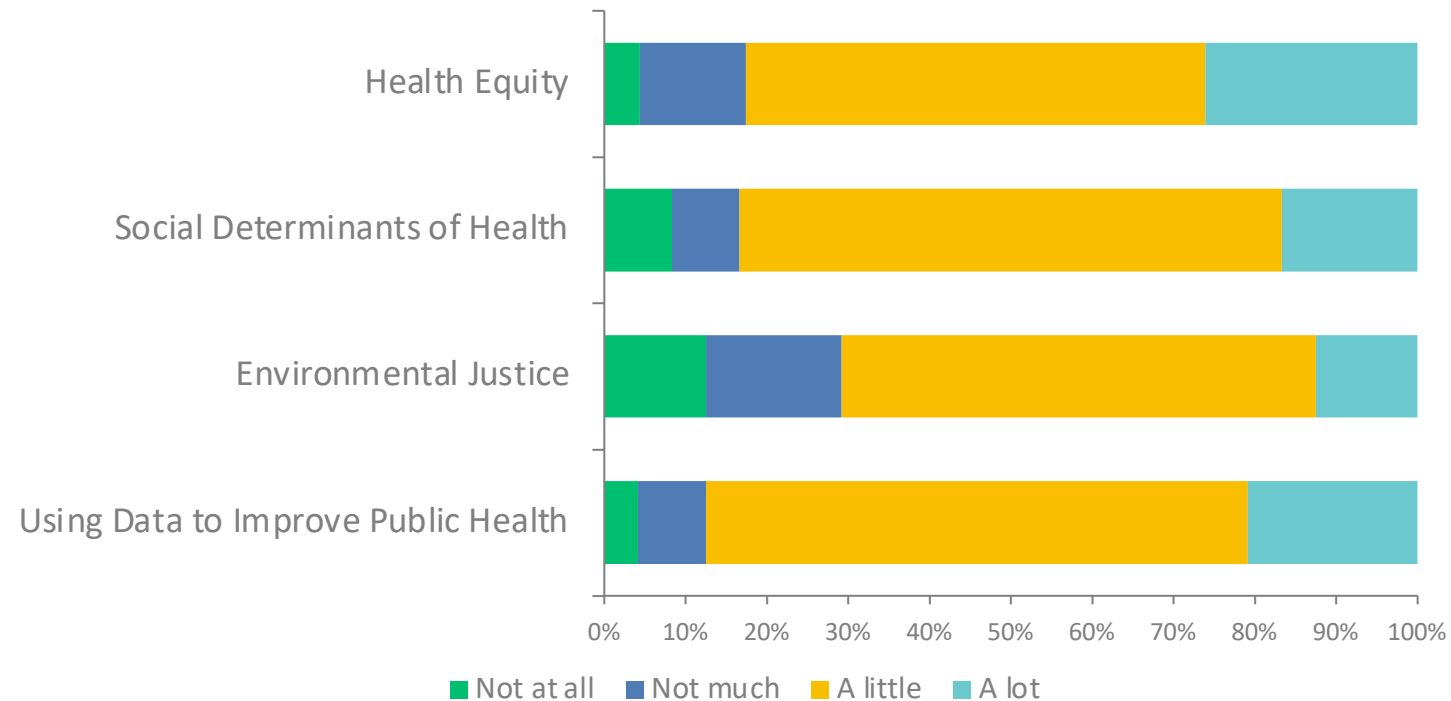
- Training: technical skills (data collection and/or analysis), general public health training
- Professional Development: certification and licensing
- Staffing
- Assessment, Performance Improvement & Accreditation
- Technical Assistance: epidemiology, data analysis, public health informatics



# NWTEC 2024 Tribal Leaders' Priorities Survey

How confident are you at addressing the following public health concepts with your public health workforce?

Answered: 24 Skipped: 0



# Public Health Infrastructure: Suggested Steps



Initial community assessment (definition of needs) in collaboration with Tribal Government



Examine existing public health policies and programs



Develop desired structure and funding sources



Write grants/contracts for funding or advocate for other funding



Hire subsequent staff and expand public health program services



# Public Health Infrastructure: Suggested Steps



Initial community assessment (definition of needs) in collaboration with Tribal Government



Examine existing public health policies and programs



Develop desired structure and funding sources



Write grants/contracts for funding or advocate for other funding



Hire subsequent staff and expand public health program services



# Public Health Capacity & Expertise Assessment

- Conducted with all 9 Tribes & NARA-NW between 2020-2023
- Comprehensive guided self-assessment adapted by NPAIHB from Oregon Public Health Modernization assessment
- Multi-day, in-person assessment of current Tribal Public Health workforce and program areas, with active participation of Tribal health & other key tribal departments
- Resulting detailed report to be used for developing Public Health Action Plan
- Available to Idaho and Washington Tribes upon request





# Public Health Capacity & Expertise Assessment

## CAPABILITIES

Foundational capabilities are the knowledge, skills, or abilities necessary to carry out a public health activity or program.

Assessment & Epidemiology

Emergency Preparedness & Response

Communications

Policy Planning

Leadership & Organizational Competencies

Health Equity & Cultural Responsiveness

Community Partnership Development

## PROGRAMS

Foundational programs are those services that are necessary to assess, protect, or improve public health.

Communicable Disease Control

Environmental Public Health

Prevention & Health Promotion

Access to Clinical Preventive Services



# PH Assessment Framework

## ENVIRONMENT

Place, location, geography, economic, political, social structures



## INFRASTRUCTURE

Policies, procedures, services, plans, strategic plans, service design/organizational structure



## MISSION

Values, mission, purpose, connections, skills, characteristics, mandate, organizational spirit, vision



## RESOURCES

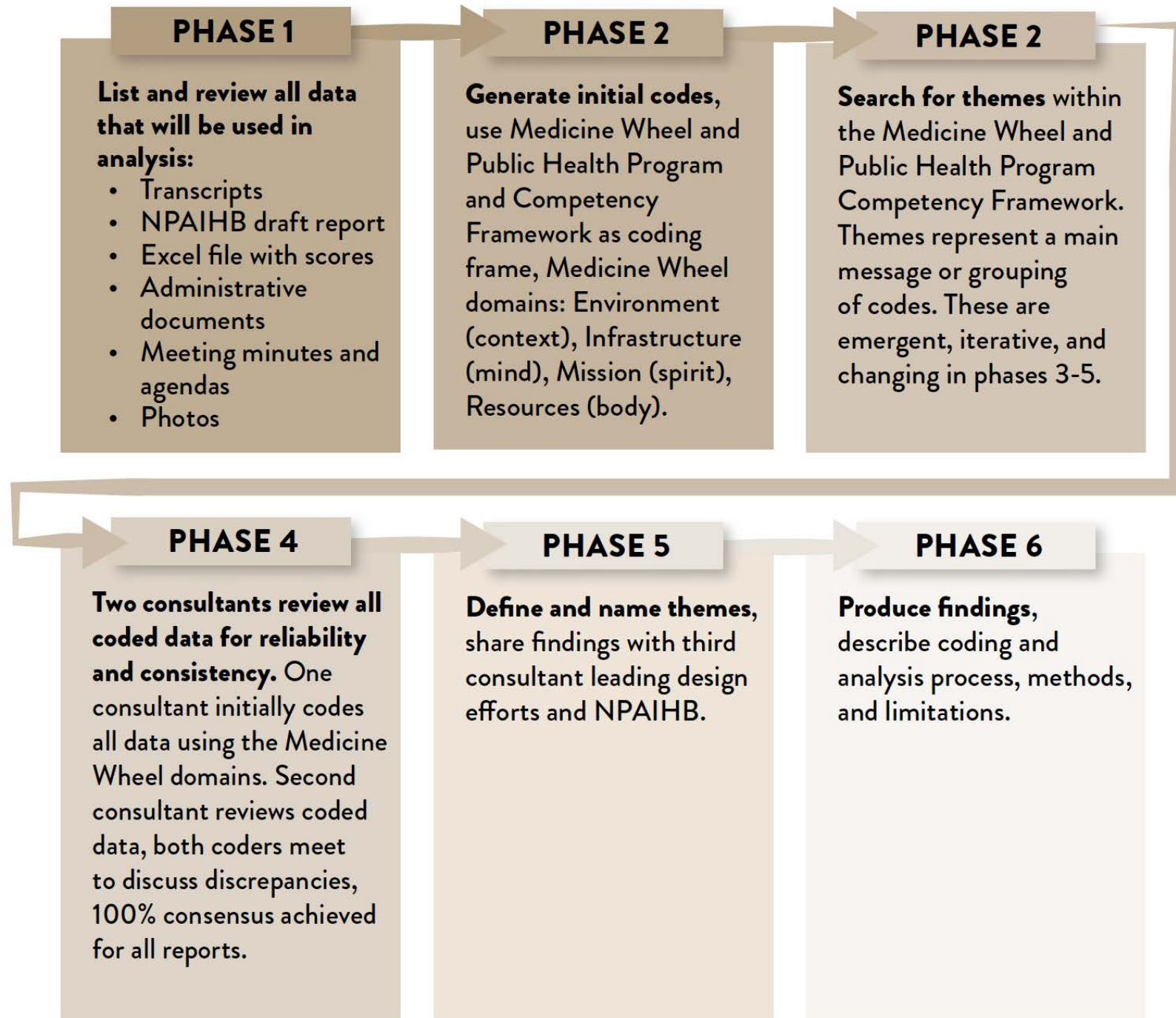
Leadership, human beings, funding, coalitions/partnerships, information, champions, things we can touch that support our efforts, reports, physical items, computers



# Assessment: Qualitative Analysis Steps



NORTHWEST PORTLAND AREA  
INDIAN HEALTH BOARD  
*Indian Leadership for Indian Health*



# Discussion Questions

- What are your biggest questions or concerns about public health workforce development?
- Is your tribe interested in learning more about the Public Health Capacity & Expertise Assessment?
- Does your tribe have resources to share, such as tribal public health policies and/or position descriptions to share?



# For more information or technical assistance

## **Bridget Canniff**

Project Director, Public Health Improvement & Training

[bcanniff@npaihb.org](mailto:bcanniff@npaihb.org)

## **Barbara Gladue**

Oregon Tribal Public Health Modernization Manager

[bgladue@npaihb.org](mailto:bgladue@npaihb.org)

## **Nancy Bennett**

Washington Tribal Public Health Improvement Manager

[nbennett@npaihb.org](mailto:nbennett@npaihb.org)



NORTHWEST PORTLAND AREA  
INDIAN HEALTH BOARD  
*Indian Leadership for Indian Health*

# Portland Area IHS Update

---

GENIEL HARRISON, MD  
CHIEF MEDICAL OFFICER  
OFFICE, PORTLAND AREA IHS  
AUGUST 13, 2024



# Topics for Today

---

## Current Situation Report –

- COVID-19
- Vaccine Updates

# COVID-19 Update in the US

## COVID-19 Update for the United States

### Early Indicators

#### Test Positivity >

% Test Positivity

**17.6%**

Week ending August 3, 2024  
Previous week 16.4%



Aug 12, 2023      Aug 3, 2024

#### Emergency Department Visits >

% Diagnosed as COVID-19

**2.3%**

Week ending August 3, 2024  
Previous week 2.2%



Aug 12, 2023      Aug 3, 2024

### Severity Indicators

#### Hospitalizations >

Rate per 100,000 population

**3.3**

Week ending July 20, 2024  
Previous week 3.2



Jul 29, 2023      Jul 20, 2024

#### Deaths >

% of All Deaths in U.S. Due to COVID-19

**1.5%**

Week ending August 3, 2024  
Previous week 1.4%



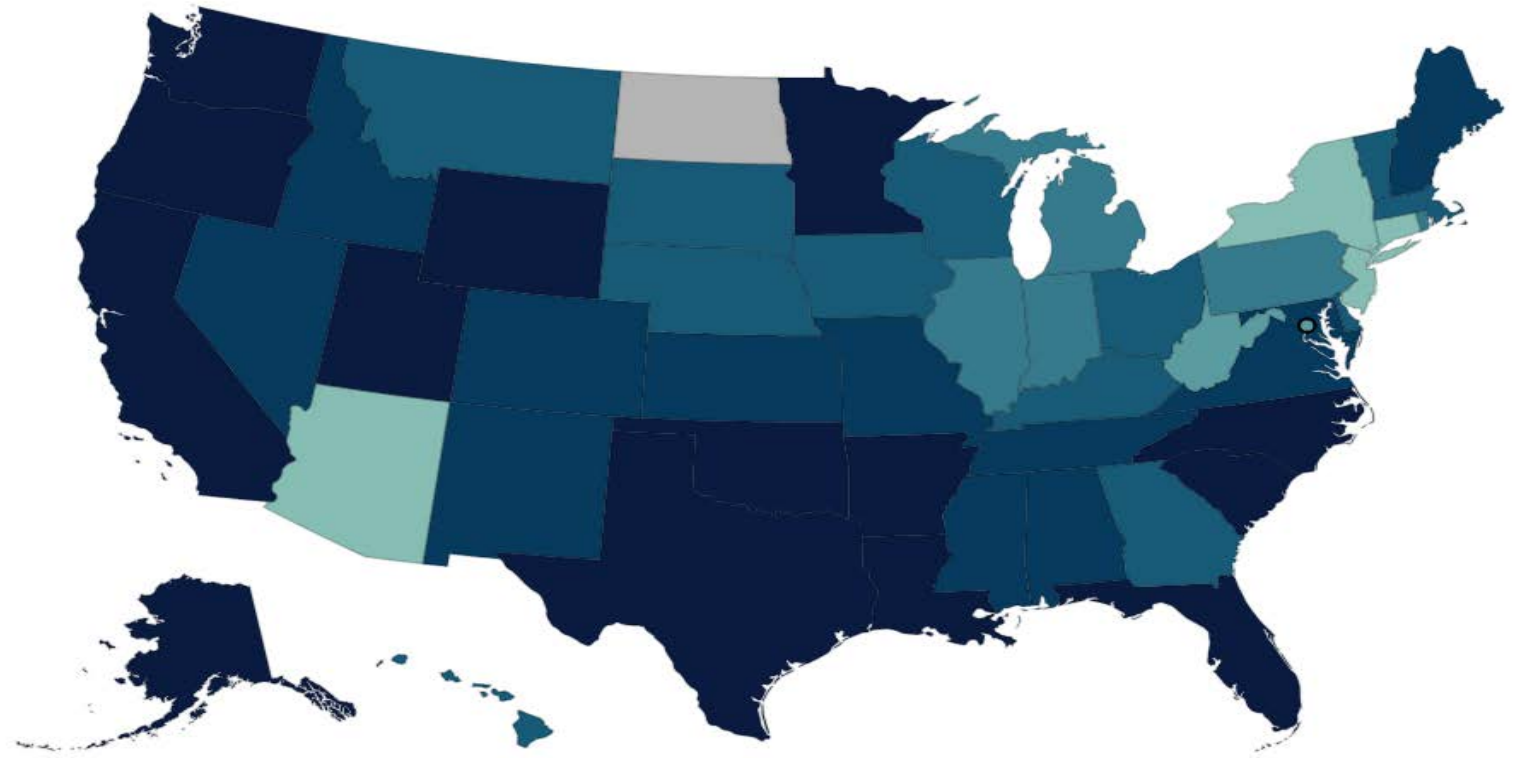
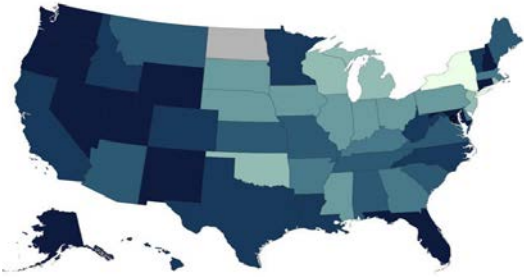
Aug 12, 2023      Aug 3, 2024

These early indicators represent a portion of national COVID-19 tests and emergency department visits. [Wastewater](#) information also provides early indicators of spread.

CDC | Test Positivity data through: August 3, 2024; Emergency Department Visit data through: August 3, 2024; Hospitalization data through: July 20, 2024; Death data through: August 3, 2024.  
Posted: August 12, 2024 5:42 PM ET



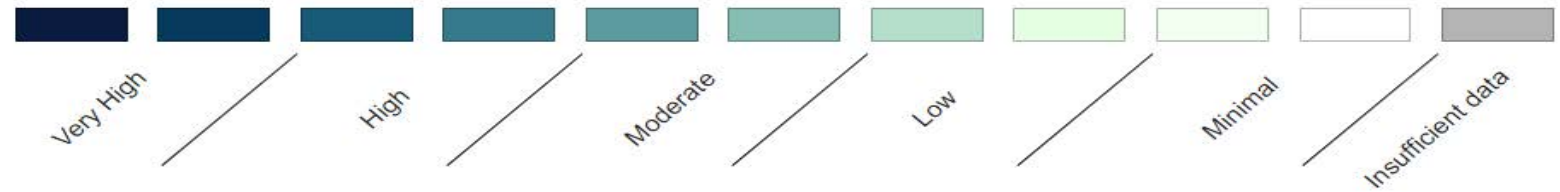
# COVID-19 Wastewater Surveillance



Territories **GU** **PR** **VI**

## Current SARS-CoV-2 Wastewater Viral Activity Level

Select a level to add or remove it from the visualization.

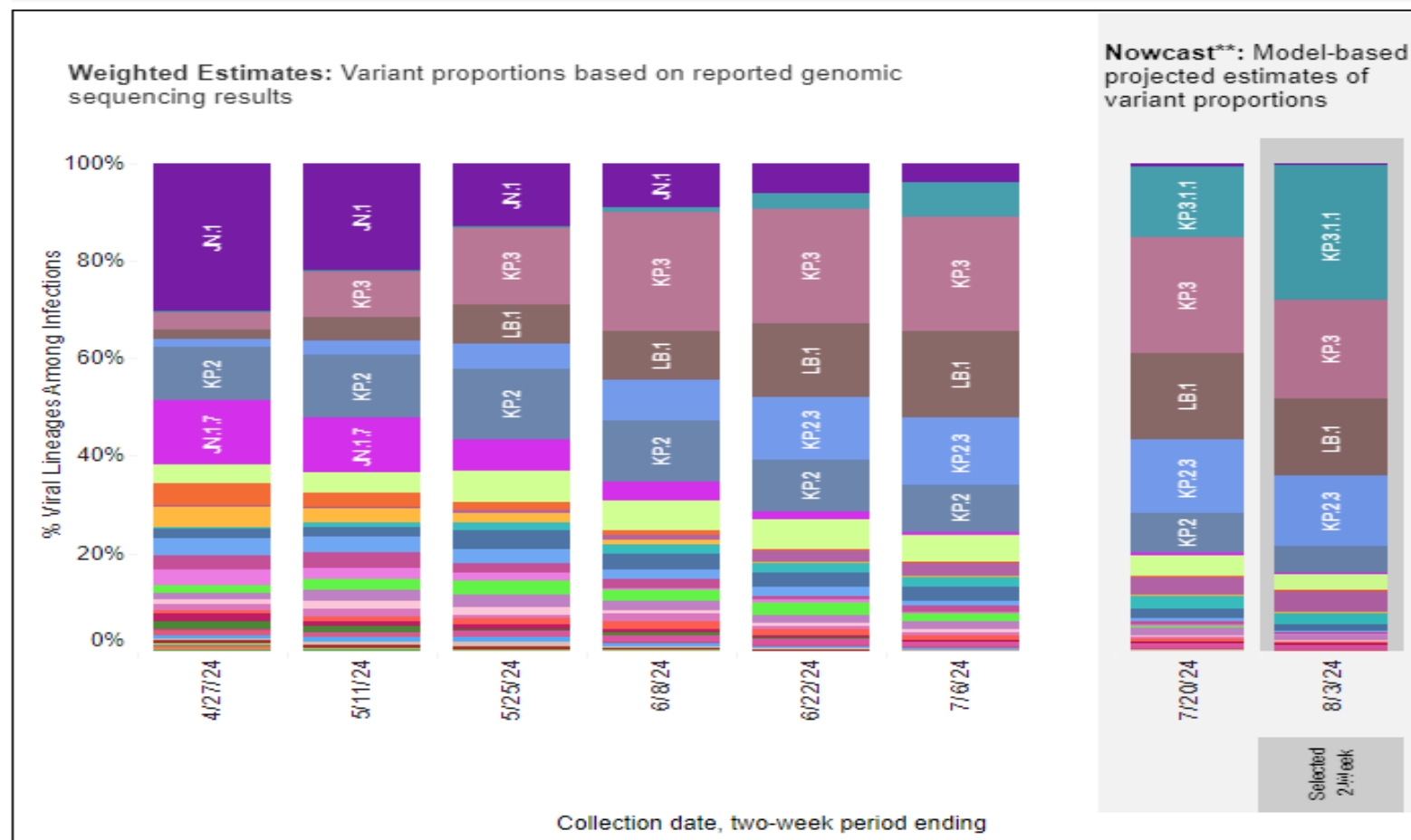


# Variants

Weighted and Nowcast Estimates in United States for 2-Week Periods in 4/14/2024 – 8/3/2024

Nowcast Estimates in United States for 7/21/2024 – 8/3/2024

 Hover over (or tap in mobile) any lineage of interest to see the amount of uncertainty in that lineage's estimate.



USA			
WHO label	Lineage #	%Total	95%PI
Omicron	KP.3.1.1	27.8%	23.0-33.2%
	KP.3	20.1%	17.2-23.4%
	LB.1	16.0%	13.5-18.7%
	KP.2.3	14.2%	11.2-17.8%
	KP.2	5.7%	4.2-7.6%
	LP.1	4.5%	3.1-6.4%
	KP.1.1	3.2%	2.4-4.4%
	KP.1.1.3	2.6%	1.7-3.8%
	JN.1.16.1	1.2%	0.8-1.8%
	LF.3.1	1.1%	0.7-1.7%
	KS.1	0.9%	0.6-1.4%
	KP.4.1	0.4%	0.2-0.9%
	JN.1.18	0.4%	0.2-0.6%
	JN.1.11.1	0.3%	0.2-0.5%
	JN.1	0.3%	0.2-0.5%
	XDV.1	0.3%	0.2-0.5%
	KW.1.1	0.2%	0.1-0.4%
	JN.1.16	0.2%	0.2-0.3%
	JN.1.7	0.2%	0.1-0.3%
	KP.1.2	0.1%	0.1-0.2%
	JN.1.13.1	0.0%	0.0-0.1%
	KQ.1	0.0%	0.0-0.1%
	JN.1.8.1	0.0%	0.0-0.0%
	XDP	0.0%	0.0-0.0%
	JN.1.4.3	0.0%	0.0-0.0%
	JN.1.32	0.0%	0.0-0.0%
	KV.2	0.0%	0.0-0.0%
	BA.2	0.0%	0.0-0.0%

national  
**IMMUNIZATION**  
awareness month



Adults need  
vaccines, too!



**VACCINES**  
*are not just for kids.*



**National Immunization  
Awareness Month**

# 2024-2025 Influenza vaccine

---

- Trivalent seasonal influenza vaccines include:
  - Two influenza A viruses (H1N1, H3N2)
  - One influenza B virus
- Everyone 6 months of age and older should get a flu shot to reduce the risk of influenza and its complications
- Clinics should begin their influenza vaccination planning now and to vaccinate patients once the 2024-2025 influenza vaccines become available

# When is the optimal timing for infants and toddlers to receive nirsevimab to prevent RSV?

---

- In the first week of life for infants born shortly before or during the RSV season (typically October through March).
- Infants with prolonged birth hospitalizations due to prematurity or other causes should receive nirsevimab shortly before or promptly after discharge.
- Infants younger than age 8 months born outside of the RSV season and older infants or toddlers at **high risk** who are recommended to receive nirsevimab in their second RSV season, should aim to receive nirsevimab shortly before the start of the RSV season (typically October).
- If the ideal timing is missed, age-eligible infants and children who have not yet received a dose may be immunized at any time during the RSV season.



# State Partner Updates



Comments  
& Questions



NORTHWEST PORTLAND AREA  
INDIAN HEALTH BOARD  
*Indian Leadership for Indian Health*