

# NPAIHB Weekly Update

August 20, 2024

Please sign in using the chat box:

Enter the tribe or organization you are representing  
and names of all people participating with you today



NORTHWEST PORTLAND AREA  
INDIAN HEALTH BOARD  
*Indian Leadership for Indian Health*

# Information for Today's Call

## Agenda

- Welcome & Introduction: Bridget Canniff
- Upcoming Indian Country ECHO Sessions
- Upcoming NPAIHB Weekly Update Sessions
- Upcoming NPAIHB Events & Resources
- NWTEC Update – Mpox, COVID-19 & Influenza: Victoria Warren-Mears
- IHS & State Partner Updates
- Questions & Comments

## Guidelines

- Please place yourself on mute unless speaking
- Sign in, using chat box, with your tribe/organization and names of all participants
- Use the chat box for questions, for Q&A after updates and announcements



# Upcoming Indian Country ECHO Telehealth Opportunities

- **Dermatology ECHO** – 3<sup>rd</sup> Tuesday of every month at 3pm PT
  - Tuesday, August 20<sup>th</sup> at 3pm PT
  - Topic: *Warts and Molluscum*
  - To learn more and join: <https://www.indiancountryecho.org/program/dermatology-echo-program/>
- **Hepatitis C ECHO** – Wednesdays at 11am PT
  - Wednesday, August 21<sup>st</sup> at 11am PT
  - Topic: *Respectful Communication Toward Those We Serve*
  - To learn more and join: <https://www.indiancountryecho.org/program/hepatitis-c/>
- **The Month in Virology ECHO (Formerly COVID-19 ECHO)** – 3<sup>rd</sup> Wednesday of every month at 12pm PT
  - Wednesday, August 21<sup>st</sup> at 12pm PT
  - Didactic Topic: *The Month in Virology Clinical Updates*
  - To learn more and join: <https://www.indiancountryecho.org/program/covid-19/>
- **Journey to Health ECHO** – 2<sup>nd</sup> & 4<sup>th</sup> Thursday of every month at 7am/12pm PT
  - Thursday, August 22<sup>nd</sup> at 12pm PT
  - Didactic Topic: *Re-Membrance: Reflections on Indigenizing Care for the 7th Generation*
  - To learn more and join: <https://www.indiancountryecho.org/program/journey-to-health-echo-program/>

# Weekly Update Schedule Preview: August-September

**August 27:** Legislative & Policy Update

## Topics coming in September:

- NWTEC Update New Tribal Memoranda of Agreement for Data Sharing (rescheduled from August 20)
- Immunization & Respiratory Disease Season Preparation
- New WSU Analytics Center



Visit [www.npaihb.org/weeklyupdate](http://www.npaihb.org/weeklyupdate) for upcoming topics, past presentations, and more!

# Upcoming NPAIHB Events

## Northwest Tribal Food Sovereignty Gathering

September 3-5

Heritage University, Toppenish, WA

Register at:

<https://lil.ms/ombw>



**Northwest Tribal  
Food Sovereignty  
Coalition Annual  
Gathering**

 **Location:** Heritage University, 3240 Fort Rd, Toppenish, WA 98948

 **Date and time:** Tue, Sep 3, 2024 5:00 PM - Thu, Sep 5, 2024 5:00 PM

Join us for two days filled with inspiring knowledge keepers, tasty foods, and community building at Heritage University.



**Register now here:** <http://lil.ms/ombw>



NORTHWEST PORTLAND AREA  
INDIAN HEALTH BOARD  
*Indian Leadership for Indian Health*

NPAIHB Events Calendar: <https://www.npaihb.org/npaihb-events/>

# Mpox, COVID-19, and Influenza (Oh My!)

Victoria Warren-Mears

Director, Northwest Tribal Epidemiology Center



NORTHWEST PORTLAND AREA  
INDIAN HEALTH BOARD  
*Indian Leadership for Indian Health*

## Mpox virus detection in wastewater in the past 4 weeks, United States

Time Period: July 18, 2024 – August 14, 2024

**Consistent detection**

0 sites (0%)

**Intermittent detection**

1 site (0%)

**No detection**

330 sites (84%)

**No recent data**

60 sites (15%)

Note: Click on a state to zoom in.



### Legend

● Consistent detection

● Intermittent detection

● No detection

● No recent data

Note: Click on a detection category in the legend to remove sites with that detection category from the map.

### About the Data

#### Detection categories:

● **Consistent detection:** Mpox virus was detected in more than 80% of samples in the past 4 weeks AND the most recent detection was within the past 2 weeks.

● **Intermittent detection:** Mpox virus was detected in 1% to 80% of samples in the past 4 weeks AND the most recent detection was within the past 2 weeks.

● **No detection:** Mpox virus was not detected in any samples from the site in the past 4 weeks OR the most recent detection was more than 2 weeks ago.

● **No recent data:** Too few samples were submitted (fewer than 3) in the past 4 weeks.

# Mpox in the United States

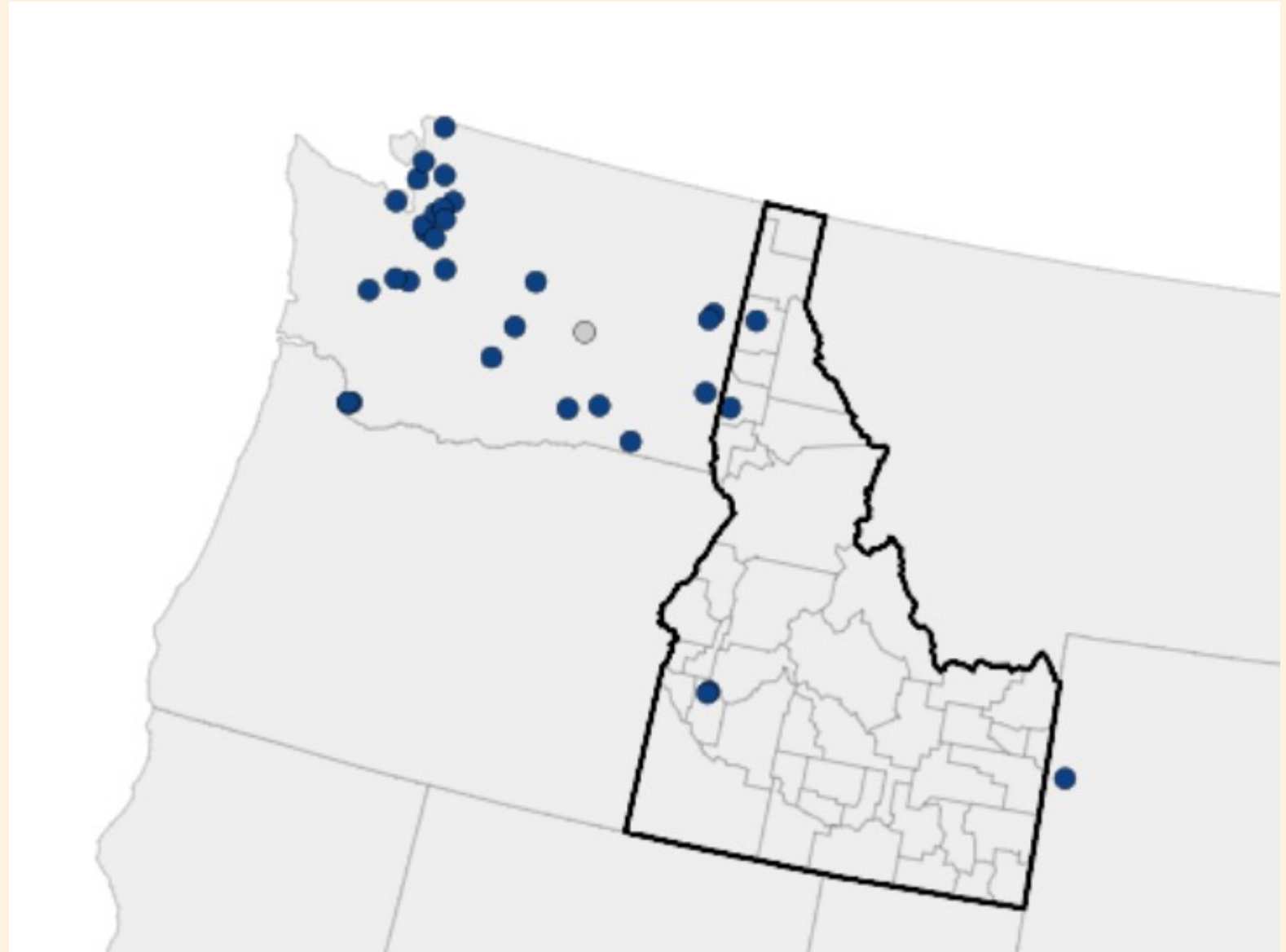
Laboratory tests used for mpox wastewater surveillance can tell us if the virus's genetic material (viral DNA) is in untreated community wastewater. The tests cannot tell us if there is infectious virus in wastewater, only that the virus's genetic material is present. We do not know if mpox virus remains infectious, or for how long, in untreated wastewater. No detection of mpox virus in wastewater means there is no evidence from wastewater data that mpox is spreading in the local community. However, very low infection levels may be below the detection limit for wastewater testing. Intermittent or consistent detection means there are likely ongoing mpox infections in the community.

Source: [www.cdc.gov/nwss/wastewater-surveillance/mpox-data.html](https://www.cdc.gov/nwss/wastewater-surveillance/mpox-data.html)

# The Regional Mpox Situation

## Legend

- Consistent detection
- Intermittent detection
- No detection
- No recent data



NORTHWEST PORTLAND AREA  
INDIAN HEALTH BOARD  
*Indian Leadership for Indian Health*

Source: [www.cdc.gov/nwss/wastewater-surveillance/mpox-data.html](http://www.cdc.gov/nwss/wastewater-surveillance/mpox-data.html)



# Signs and Symptoms

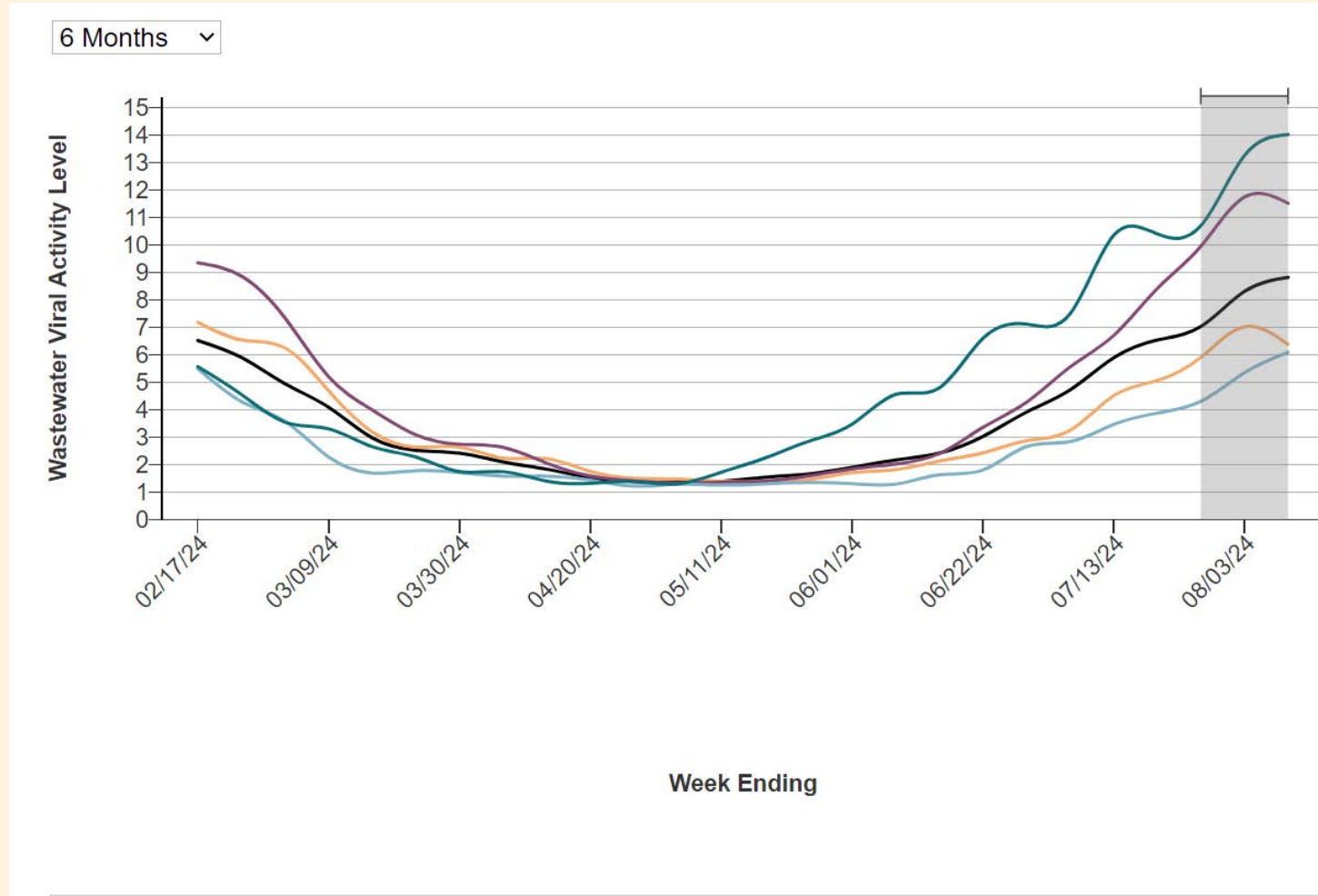
- Mpox (monkeypox) is a viral illness caused by the monkeypox virus, a species of the genus Orthopoxvirus. Two different clades exist: clade I and clade II
- Common symptoms of mpox are a skin rash or mucosal lesions which can last 2–4 weeks accompanied by fever, headache, muscle aches, back pain, low energy, and swollen lymph nodes.
- Mpox can be transmitted to humans through physical contact with someone who is infectious, with contaminated materials, or with infected animals.
- Laboratory confirmation of mpox is done by testing skin lesion material by PCR.



# COVID-19 Wastewater Surveillance

**VERY HIGH**

Nationally, the wastewater viral activity level for COVID-19 is currently **very high**.



Select a geography to add or remove it from the visualization.

- National
- Midwest
- South
- Northeast
- West



NORTHWEST PORTLAND AREA  
INDIAN HEALTH BOARD  
*Indian Leadership for Indian Health*

# Idaho COVID-19 Wastewater Trends (45 Days)

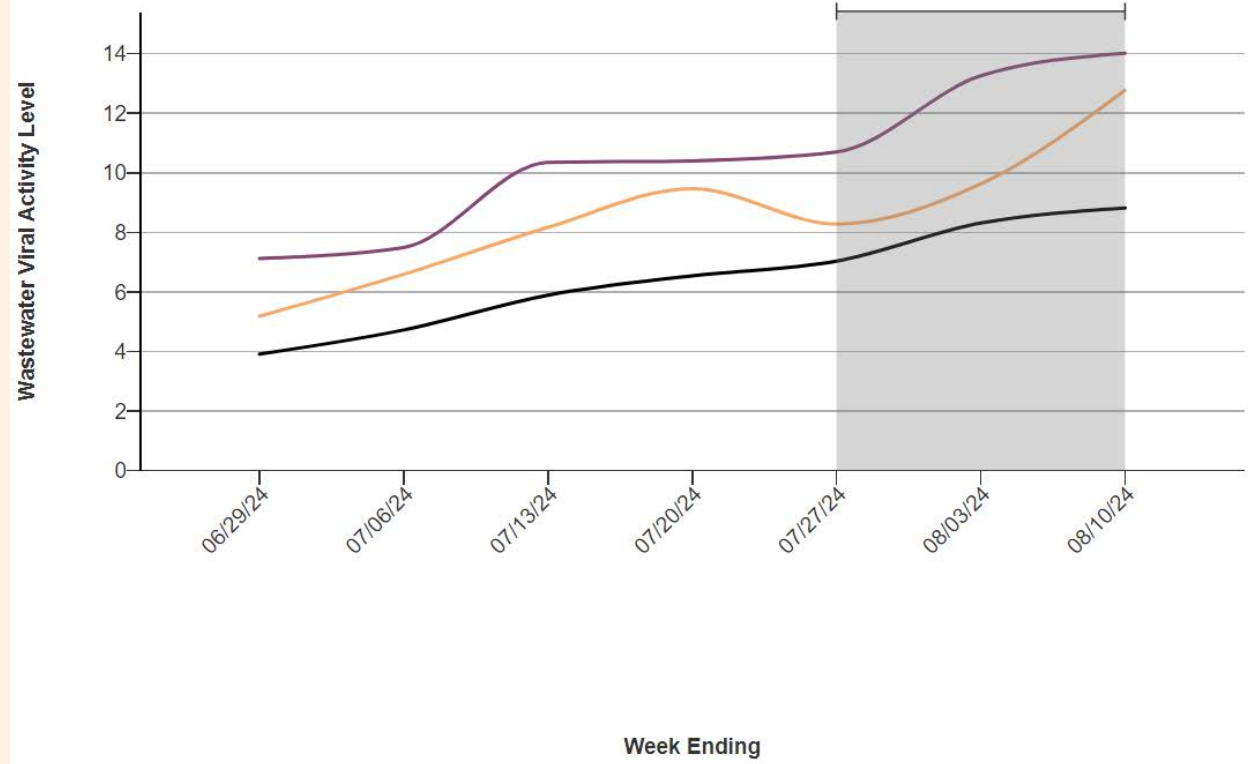
Source: [www.cdc.gov/nwss/rv/COVID19-statetrend.html](http://www.cdc.gov/nwss/rv/COVID19-statetrend.html)



NORTHWEST PORTLAND AREA  
INDIAN HEALTH BOARD  
*Indian Leadership for Indian Health*

State:  Date Period:

Idaho has 3 site(s) reporting in the past week, and 0 (0%) of its site(s) with less than six months of data. Sites with less than six months of data will tend to have larger week-to-week changes in Wastewater Viral Activity Level than those with more than six months of data.



Select a geography to add or remove it from the visualization.

Selected State  
  National  
  Region

# Oregon COVID-19 Wastewater Trends (45 Days)

Source: [www.cdc.gov/nwss/rv/COVID19-statetrend.html](http://www.cdc.gov/nwss/rv/COVID19-statetrend.html)

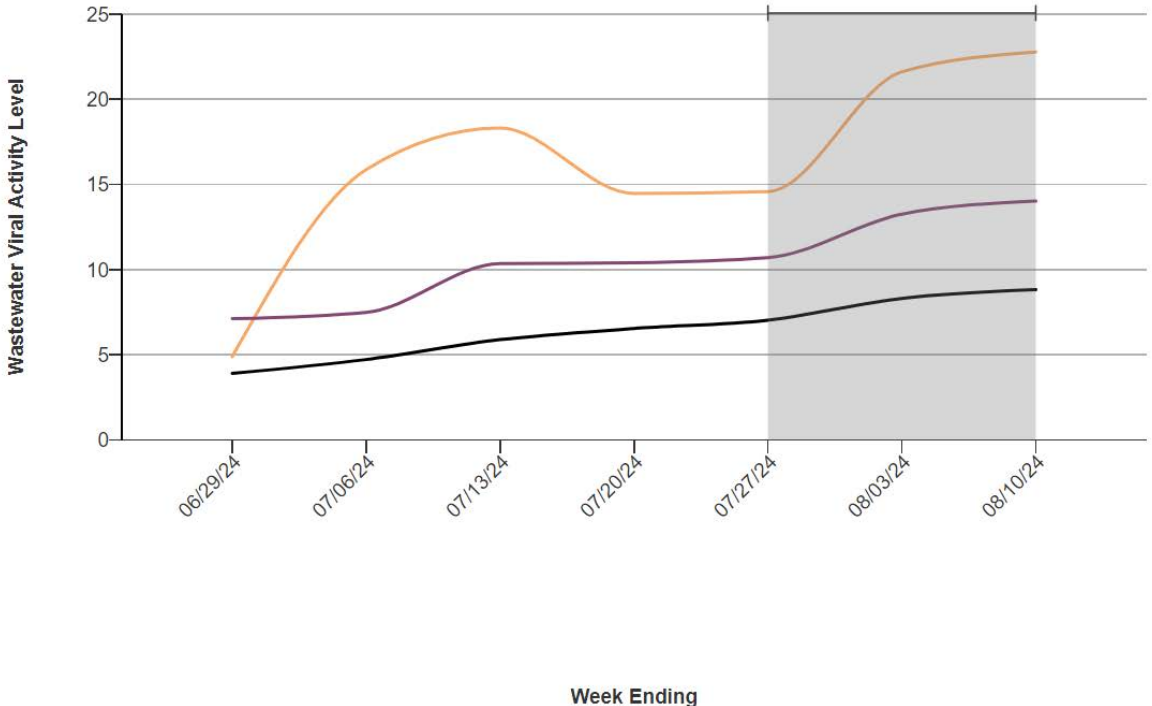


NORTHWEST PORTLAND AREA  
INDIAN HEALTH BOARD  
*Indian Leadership for Indian Health*

Make a selection from the filters to change the visualization information.

State: Oregon  
Date Period: 45 Days

Oregon has 29 site(s) reporting in the past week, and 0 (0%) of its site(s) with less than six months of data. Sites with less than six months of data will tend to have larger week-to-week changes in Wastewater Viral Activity Level than those with more than six months of data.



Select a geography to add or remove it from the visualization.

- Selected State
- National
- Region

# Washington COVID-19 Wastewater Trends (45 Days)

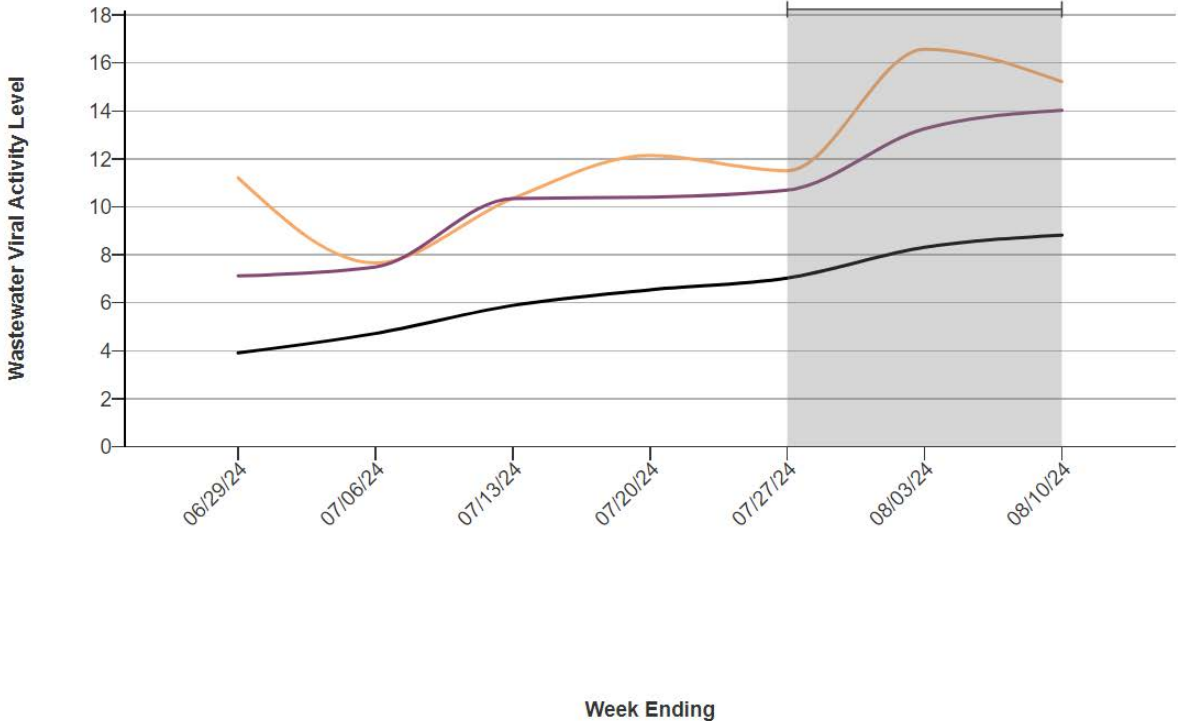
Source: [www.cdc.gov/nwss/rv/COVID19-statetrend.html](http://www.cdc.gov/nwss/rv/COVID19-statetrend.html)



NORTHWEST PORTLAND AREA  
INDIAN HEALTH BOARD  
*Indian Leadership for Indian Health*

State:  Date Period:

Washington has 29 site(s) reporting in the past week, and 0 (0%) of its site(s) with less than six months of data. Sites with less than six months of data will tend to have larger week-to-week changes in Wastewater Viral Activity Level than those with more than six months of data.



Select a geography to add or remove it from the visualization.

Selected State  
  National  
  Region

# Influenza A (H5N1) in Wastewater

Wastewater and the current outbreak of Influenza A (H5N1) in birds, cattle, and other animals:

- Current wastewater monitoring methods detect Influenza A viruses but do not determine the subtype. This means that Avian Influenza A (H5N1) viruses can be detected but would not be distinguished from other Influenza A virus subtypes.
- Wastewater testing cannot determine the source of the Influenza A virus. It could come from a human or from an animal (like a bird) or an animal product (like milk from an infected cow).



# Regional Wastewater Influenza A

Source:

[www.cdc.gov/nwss/wastewater-surveillance/Flu-A-data.html](http://www.cdc.gov/nwss/wastewater-surveillance/Flu-A-data.html)

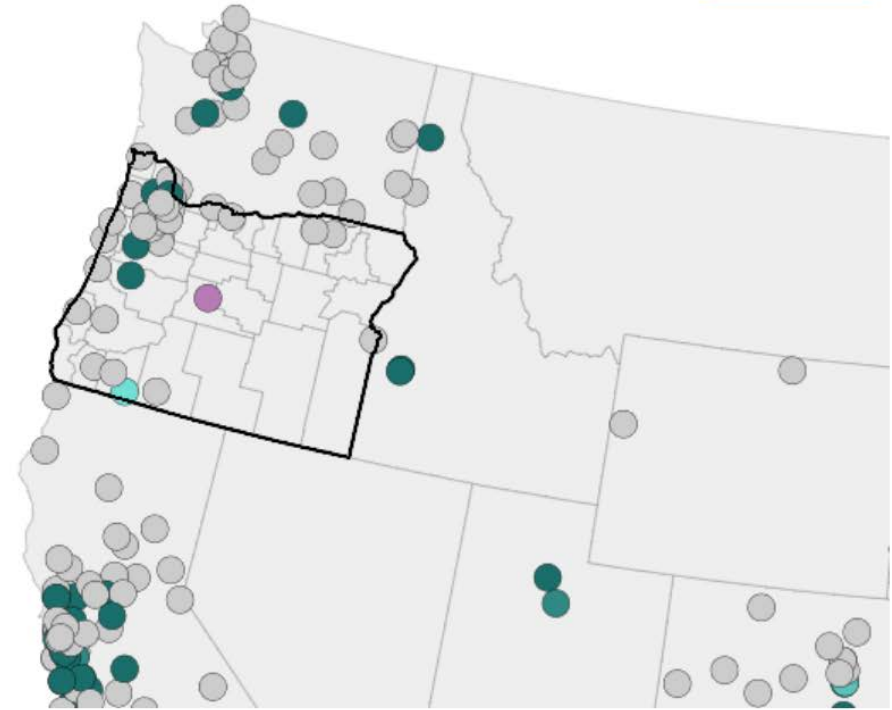


NORTHWEST PORTLAND AREA  
INDIAN HEALTH BOARD  
*Indian Leadership for Indian Health*

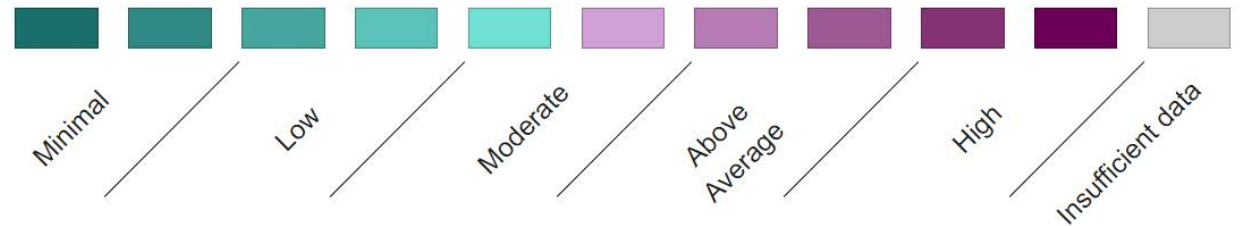
Week

2024-08-10

Reset Zoom



Select a color from the legend to add or remove it from the map.



*All data are preliminary and may change as more reports are received. Wastewater data does not distinguish between human and animal waste or by-products.*

# Do You Have Extra COVID-19 Funds?

- **Use them for issues related to COVID-19:**
  - We know commercial tobacco use and substance use rose during the pandemic.
  - We know that mental health declined during the pandemic, in general and suicide ideation/attempts went up and fluctuated during the pandemic.
  - We know that routine immunizations are lagging.
  - We know that long COVID is a disability.
- Use extra funds for supplies to address any of these issues related to pandemic recovery, including cultural practice recovery; or order additional testing supplies and masks to have on hand. Think creatively.





# State Partner Updates



Comments  
& Questions



NORTHWEST PORTLAND AREA  
INDIAN HEALTH BOARD  
*Indian Leadership for Indian Health*