

NPAIHB Weekly Update

September 17, 2024

Please sign in using the chat box:

Enter the tribe or organization you are representing
and names of all people participating with you today



NORTHWEST PORTLAND AREA
INDIAN HEALTH BOARD
Indian Leadership for Indian Health

Information for Today's Call

Agenda

- Welcome & Introduction: Bridget Canniff
- Upcoming Indian Country ECHO Sessions
- Upcoming NPAIHB Weekly Update Sessions
- Upcoming Events & Announcements
- An Introduction to ForeSITE: Eric Lofgren, WWSU
- State & IHS Partner Updates
 - Lisa Niels, WA DOH
- Questions & Comments

Guidelines

- Please place yourself on mute unless speaking
- Sign in, using chat box, with your tribe/organization and names of all participants
- Use the chat box for questions, for Q&A after updates and announcements



Upcoming Indian Country ECHO Telehealth Opportunities

- **Dermatology ECHO** – 3rd Tuesday of every month at 3pm PT
 - Tuesday, September 17th at 3pm PT
 - Topic: *Actinic Keratosis and Squamous Cell Carcinoma*
 - To learn more and join: <https://www.indiancountryecho.org/program/dermatology-echo-program/>
- **Hepatitis C ECHO** – Wednesdays at 11am PT
 - Wednesday, September 18th at 11am PT
 - Topic: *Patient Case Discussions*
 - To learn more and join: <https://www.indiancountryecho.org/program/hepatitis-c/>
- **The Month in Virology ECHO (Formerly COVID-19 ECHO)** – 3rd Wednesday of every month at 12pm PT
 - Wednesday, September 18th at 12pm PT
 - Didactic Topic: *The Month in Virology Clinical Updates*
 - To learn more and join: <https://www.indiancountryecho.org/program/covid-19/>

Upcoming Indian Country ECHO Telehealth Opportunities

- **Infectious Disease ECHO** – 3rd Thursday of every month at 11am PT
 - Thursday, September 19th at 11am PT
 - Didactic Topic: *Harm Reduction to End the Syndemic*
 - To learn more and join: <https://www.indiancountryecho.org/program/infectious-disease/>

- **Grand Rounds ECHO**
 - Monday, September 23rd at 8am PT
 - Didactic Topic: *Effectively Diagnosing and Managing Rheumatoid Arthritis in Indigenous Communities*
 - To learn more and join: <https://www.indiancountryecho.org/program/grand-rounds/>

Weekly Update Schedule Preview: September-October

September 24: Legislative & Policy Update

October 1: Measles & Measles Vaccines Update (OHA)

October 8: RSV & New Monoclonal Antibodies (OHA)
+ Health & Vaccine Updates (WA DOH)

October 15: No NPAIHB Weekly Update – QBM @ Yakama Nation



NORTHWEST PORTLAND AREA
INDIAN HEALTH BOARD
Indian Leadership for Indian Health

Visit www.npaihb.org/weeklyupdate for upcoming topics, past presentations, and more!

Upcoming Webinar

**RISK LESS.
DO MORE.**
Get this season's vaccines

Fall Respiratory Season and HHS Education Campaign

- Wednesday, September 18, 11:00 AM – 12:00 PM Pacific
- Zoom link:
cdc.zoomgov.com/j/1609024893?pwd=bZQnBIHq1yLyV8annofSwRwSYvdvYR.1
- This session will cover the latest CDC guidance for the upcoming fall respiratory virus season and introduce the HHS *Risk Less. Do More.* public education campaign.
- The webinar will also provide a valuable platform for partners to discuss challenges, share insights, and ask questions to help better prepare for the season ahead.



NORTHWEST PORTLAND AREA
INDIAN HEALTH BOARD
Indian Leadership for Indian Health

Risk Less. Do More. Education Campaign info: risklessdomore.hhs.gov

Vaccine-Related Resources

NPAIHB vaccine-related resource materials are available at:

www.indiancountryecho.org/vaccinative

Vaccinative

Handouts Videos PowerPoints

Social Media Toolkits Educational Flip Chart Are you a health provider?

Protecting One Another

To thrive our communities have worked hard to protect each member, including our most vulnerable. Today, one way we can protect ourselves and others is by getting vaccinated.

This site contains materials by Vaccinative - a national alliance of Elders, clinicians, and public health professionals dedicated to sharing accurate vaccine information for Native people by Native people.

To learn more about the [Vaccinative Alliance](#) or if you have questions, email us at Vaccinative@npaihb.org.

Physical copies of our materials are available to order at [Native Health Resources](#).

VACCINATIVE
Vaccination information for Natives by Natives



**NORTHWEST PORTLAND AREA
INDIAN HEALTH BOARD**
Indian Leadership for Indian Health



An Introduction to ForeSITE

Eric Lofgren MSPH, PhD

Associate Professor

Paul G. Allen School for Global Health

Washington State University

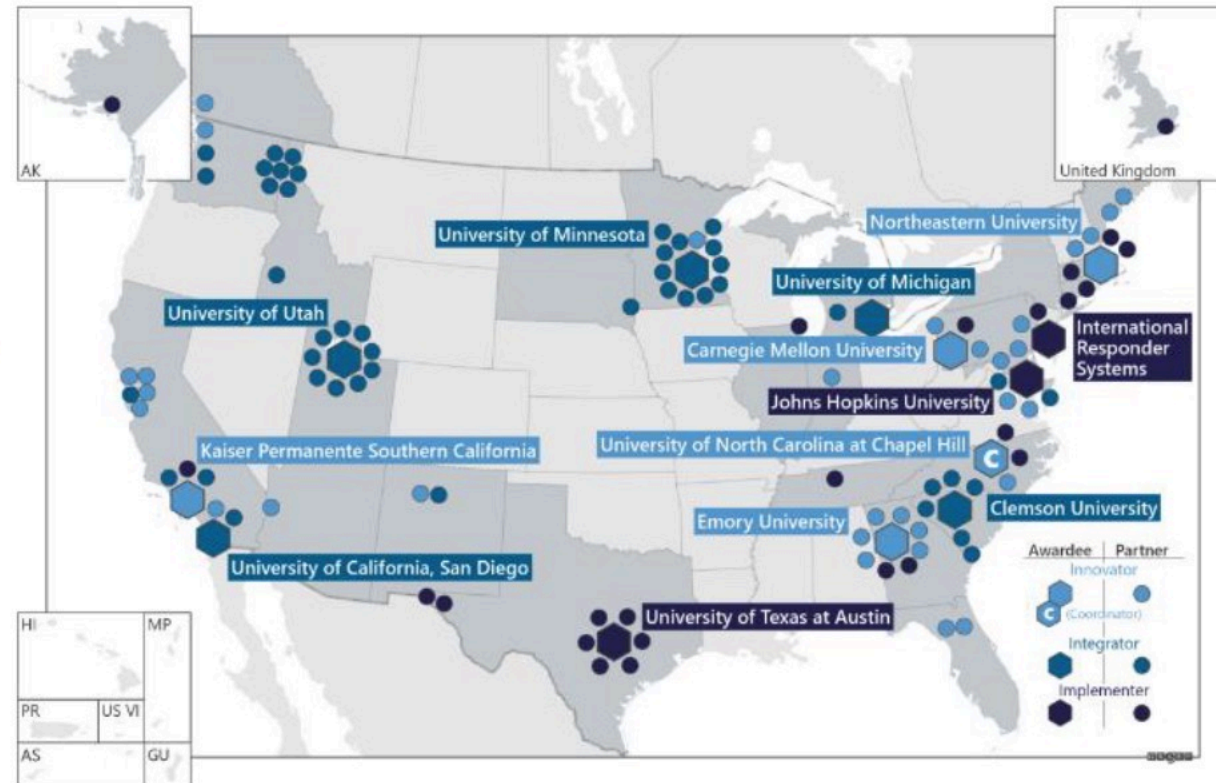
Intro to ForeSITE

- Background and Context
- Current Partners
- Foundational Concepts for Our Center
- Expanding Our Reach

Background and Context

Insight Net

- Insight Net is a group of thirteen centers funded by the CDC's Center for Forecasting and Outbreak Analytics
- Meant to help support state, tribal, local and territorial entities with outbreak analytics needs as part of collaborative partnerships
- This is expressly *not* research-focused



ForeSITE

- Forecasting and Surveillance of Infectious Threats and Epidemics
- University of Utah is the lead site with WSU as it's other major academic partner
- Intended to serve as the hub for Insight Net activities in the Intermountain West
 - This is a somewhat flexible geographic area
- Integrate, implement, and evaluate analytic, modeling, and forecasting toolsets that are customizable and adaptable to serve distinct functions in support of public health and health system response to infectious disease threats at local, state, and national levels



ForeSITE

- Public health partnerships stretch back to 2001
- Focus on public health surveillance and decision support for infectious disease epidemiology
- Advancing the use of transmission models in healthcare epidemiology



American Journal of Infection Control

Volume 35, Issue 3, April 2007, Pages 163-171

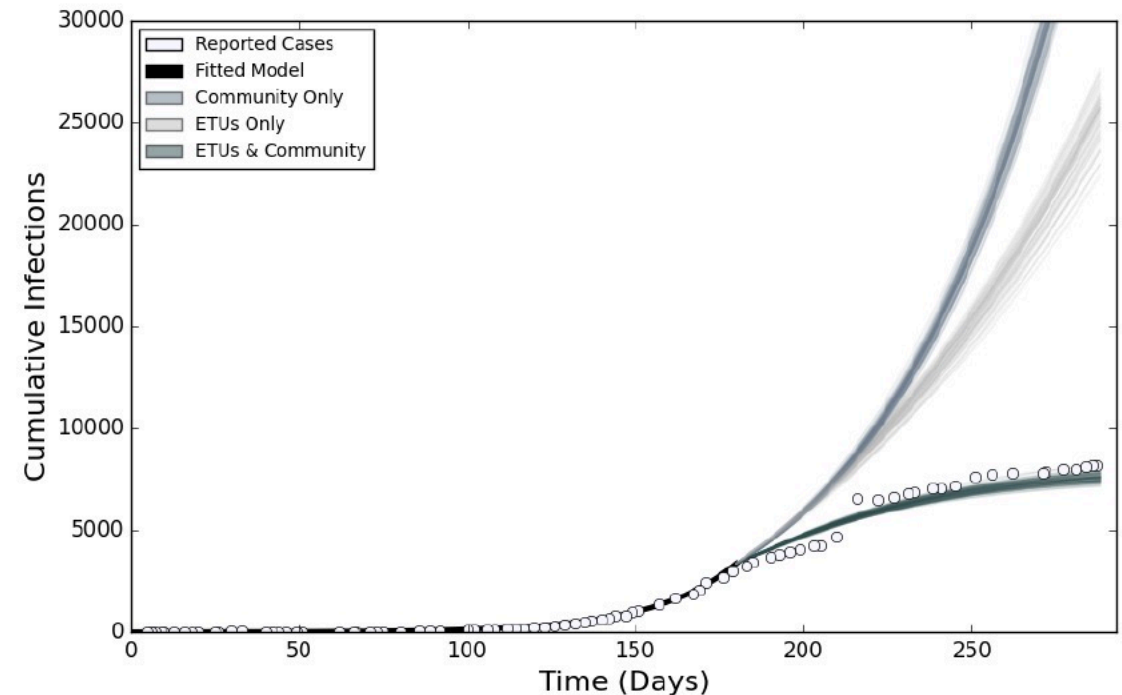


Major Article

Hospital electronic medical record–based public health surveillance system deployed during the 2002 Winter Olympic Games

Emerging Epidemiology Experience

- Decision support, disease ecology and modeling for emerging epidemics, including:
 - Novel H1N1 Influenza
 - MERS-CoV
 - Middle Eastern outbreak
 - Endemic spread in East Africa
 - Ebola and other Hemorrhagic Fevers
 - 2014 West Africa
 - 2022-2023 Uganda
 - Rift Valley Fever
 - Chagas Disease
 - Tick-borne diseases
- Rich background in hospital epidemiology



Experience during COVID-19

- Consensus scenario modeling
- Forecasting health system capacity
- Survey sampling and surveillance of community populations (HERO project)
- Using economic models to support policy-making
- COVID epi in rural communities and small congregate settings
 - Federal, state and NGO-level work on COVID-19 transmission in carceral settings



Current Partners



WASHINGTON STATE
UNIVERSITY

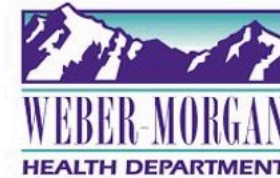


HEALTH
UNIVERSITY OF UTAH

VA



U.S. Department
of Veterans Affairs



Diverse Health Districts

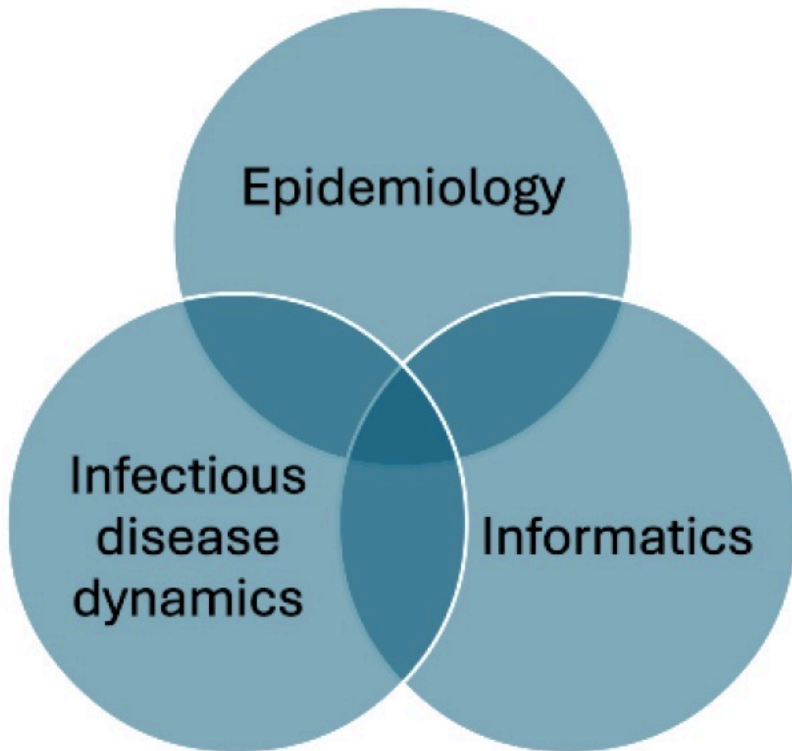


Diverse Healthcare Systems

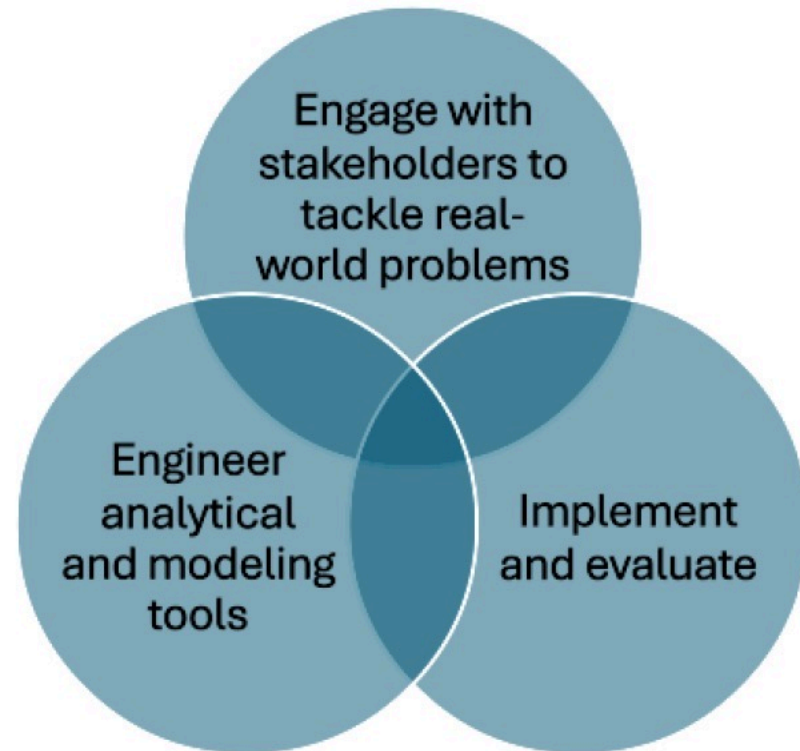


Foundational Concepts

Discipline Perspective



Activity Perspective



Prioritization of analytic and modeling needs

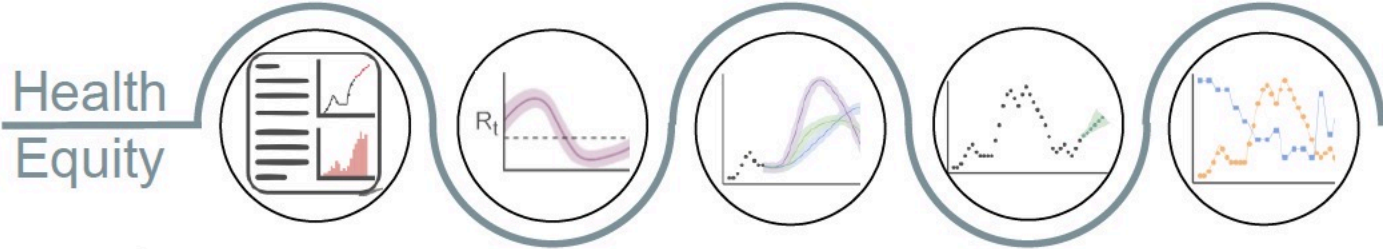
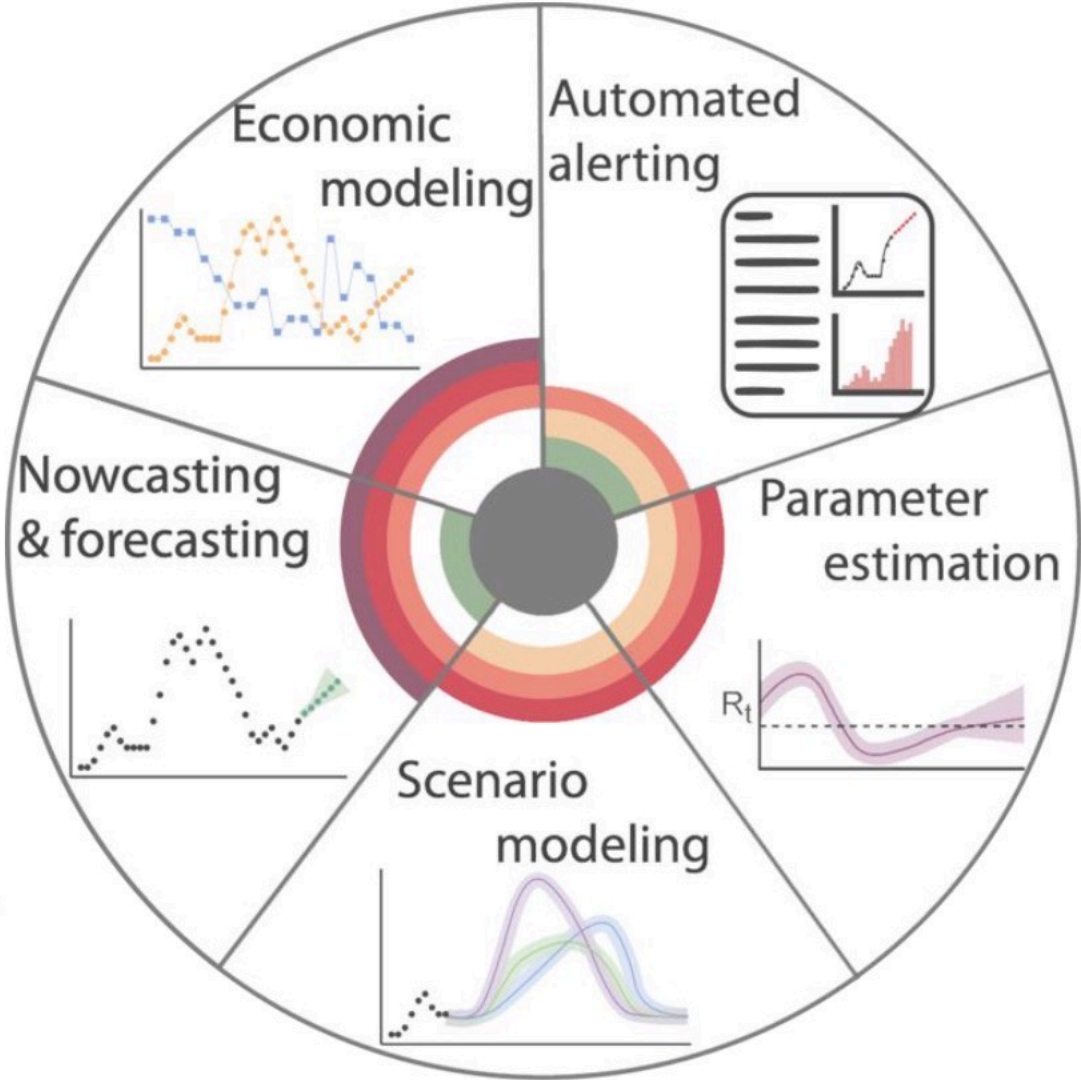
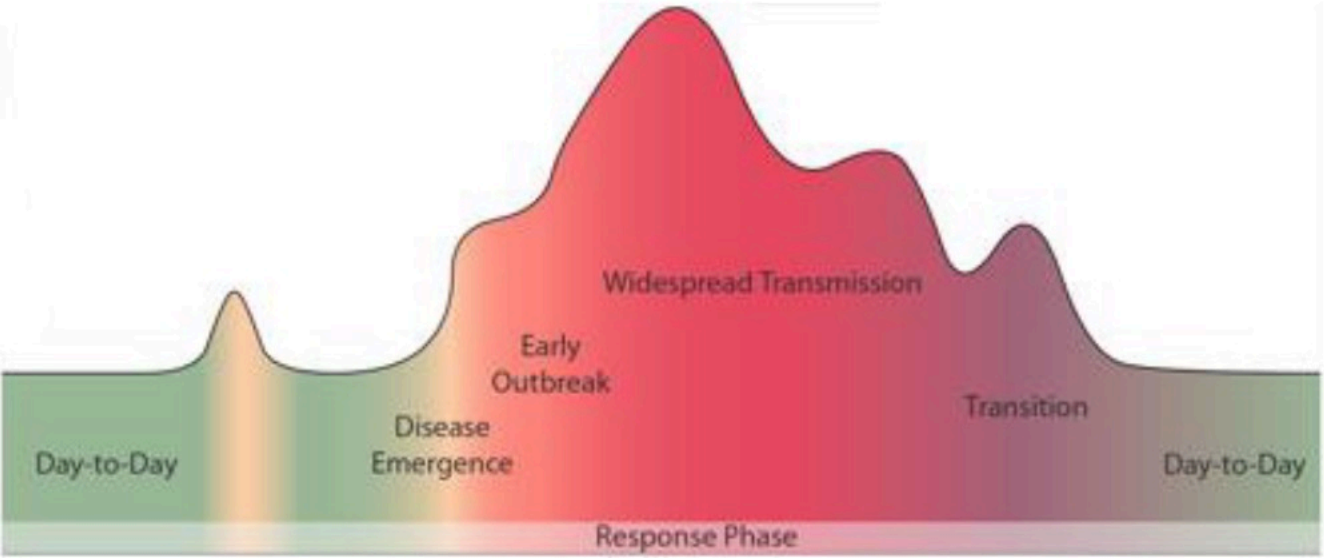
Local health dept perspective

- Sharp end of PH response
 - Case investigation
 - Outbreak investigation
 - Contact tracing
 - Local interventions
- Benefits of modeling are limited by small # of cases
- Greater dependence on external support
- Spreadsheets are still in widespread use

State perspective

- Set state-wide policy
- Different array of partners
- More extensive data resources
- Greater need for accurate nowcasting/forecasting tools
- Requirement to support diverse local health districts

Differing Tools for Differing Contexts



Health
Equity

Supplemental Cores

- STEDI
 - Sociotechnical System Evaluation, Design and Implementation
 - Getting to the heart of what our partners need – and how well we're delivering it
- Computation and Visualization
 - Strengths in both software development, data visualization, and advanced computer science
- Disease Ecology
 - Working with partners concerned about diseases at the human animal interface
- Rapid Response
 - Making sure our partners have their needs met in a timely fashion, and transitioning projects between urgent response and more sustainable timelines

Current Projects

- Work on congenital syphilis for Utah (and potentially Montana)
- Risk assessment for HPAI spillover
- Estimating the impact of wild fires on infectious disease risk

- Tool development to allow partners to use the tools we development in their own settings
- Other partner-driven projects

Expanding Our Reach

Or: Why I'm Here Today



A Lack of Tribal Partners

- There's an absence of tribal representation among our current partners
- This was largely a byproduct of a very short proposal development timeline that precluded tribal consultation
- This is something I very much want to resolve
 - This matters to me both personally and professionally

We'd Love to Have a Discussion with You

- Either collectively or individually, we'd love to have a discussion with you
- There are *lots* of opportunities for partnerships of various sorts
- Additionally, we'd be very interested in making sure our data and tools are compatible with the data in the NPAIHB EpiCenter
- Beyond ForeSITE, WSU has a growing public health program that is very interested in native health



ForeSITE

Thank You

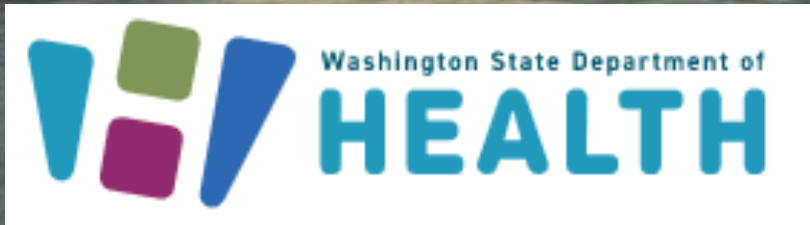
Contact Information:

Eric.Lofgren@wsu.edu

[@GermsAndNumbers](#)

Tribes & UIHO's

Health & Vaccine Updates



September 17, 2024

COVID-19

INFLUENZA

RSV

← Select a Vaccine to View

LEARN MORE

Data for the 2023-2024 COVID-19 Season

1,799,120 Doses administered

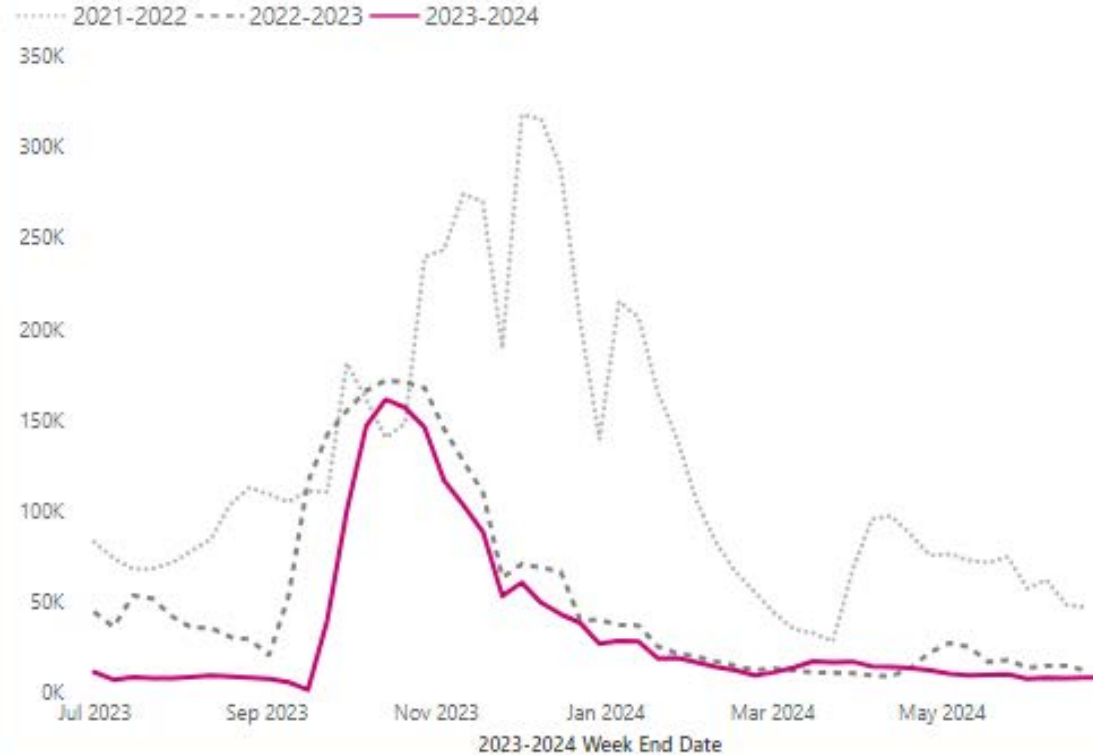
22,877 Doses administered per 100,000 people



19.4%

Vaccinated with all CDC-recommended doses (Up to Date)

Weekly Doses Administered Comparing Past and 2023-2024 COVID-19 Seasons



Visit the full [COVID-19 vaccination dashboard](#) for more data. →

- Respiratory Illness Data Dashboard
- Maintaining systems to track respiratory illness prevalence and vaccine coverage
- Monitoring vaccine coverage rates and uptake gaps

<https://doh.wa.gov/data-and-statistical-reports/diseases-and-chronic-conditions/communicable-disease-surveillance-data/respiratory-illness-data-dashboard>

2024-25 COVID-19 Vaccination Recommendations

- Everyone 6 months and older is recommended to receive a single 2024-2025 COVID-19 vaccine dose.
- Moderna (mRNA), Pfizer (mRNA), & Novavax (protein based).



COVID-19 Testing Resources

- U.S. households will be eligible to order four free COVID-19 tests beginning the end of September at [COVIDTests.gov](https://www.covidtests.gov).
- The federal ICATT program will continue to provide no-cost COVID-19 testing for uninsured people that are [symptomatic or exposed: No-Cost COVID-19 Testing \(cdc.gov\)](https://www.cdc.gov). A list of no-cost COVID-19 testing sites can be found on the site.
- Tests provided through state supported testing programs such as the COVID-19 testing kiosks are free: [Testing Kiosks | Washington State Department of Health](https://www.wa.gov).



Vaccine Access

1. **CDC has additional funds to support the purchase of COVID-19 vaccine for un- and under-insured adults for the 2024-2025 respiratory season through AVP!**
 - COVID-19 vaccine may be administered to BOTH uninsured AND underinsured adults for the 2024-2025 season. All other vaccines may only be given to uninsured adults.
2. **Improved access via the DOH Care-A-Van Service will continue**
<https://doh.wa.gov/you-and-your-family/care-van-mobile-health-services>





- To submit a request or find events in your area: doh.wa.gov/careavan
- MonkeyPox event requests: [MPV Clinic Request Form \(smartsheet.com\)](https://smartsheet.com)
- **Care-A-Van now offers Flu and ALL Childhood vaccinations at events!**
- Also find upcoming events on that same site:

09/20/2024	12:00 - 3:00pm	Lummi Tribal Health Center Vaccine Event	2665 Kwina Road Bellingham, WA 98226	<ul style="list-style-type: none"> • Flu vaccine • Mpox vaccine • Childhood vaccines 	<ul style="list-style-type: none"> • Flu • Mpox • Childhood Vaccines 	In conference room Chulhtenem on the 2 nd floor side B.
11/13/2024	12:00 - 4:00pm	American Indian Health Commission WA State Tribal and State Leaders Health Summit	15347 Suquamish Way NE Suquamish, WA 98392	<ul style="list-style-type: none"> • Flu vaccine • Blood pressure screening • Blood glucose screening • Other • Naloxone (Narcan) Distribution 	<ul style="list-style-type: none"> • Flu 	

Flu Vaccine Recommendations

Everyone 6 months and older in the United States, with rare exception, should get an influenza (flu) vaccine every season. There is no preference for any flu vaccine over another.

Options for this age group include:

- inactivated influenza vaccine [IIV]
- recombinant influenza vaccine [RIV]
- live attenuated influenza vaccine (LAIV)

People 65 and older should get a higher dose or adjuvanted flu vaccine, including:

- Fluzone High-Dose Trivalent
- Flublok Trivalent
- Fluad Trivalent

SOURCE: <https://www.cdc.gov/flu/prevent/keyfacts.htm>

Data & Surveillance:

Washington State Influenza Vaccination Dashboard

- The [Washington State Influenza Vaccination Dashboard](#) is a publicly available dashboard that is updated weekly September through April.
- Data source for the dashboard is the Washington State Immunization Information System (WAIIS).
- The dashboard shows data for the current season with the previous three seasons for comparison across metrics.
- Metrics on the dashboard include:
 - Influenza Doses Administered by week and demographics
 - Influenza Vaccination Coverage by demographics and geographic location
- Census population estimates are used for the denominators for coverage metrics.

RSV Vaccine Recommendations for Older Adults

A **single life time dose** of any RSV vaccine (Abrysvo, Arexvy, or mResvia) is recommended for:

- Adults age 75 years and older
- Adults age 60-74 years who are at increased risk of severe disease

Older Adults are not limited to seasonal administration and can receive it any time of the year.

(mRESVIA (mRNA-1345), approved in May 2024, a 60+ mRNA RSV vaccine)



Timing of administration of maternal Pfizer RSV vaccine (Abrysvo) and nirsevimab (Beyfortus)

- **Maternal RSV vaccine**
 - For pregnant people at 32–36 weeks' gestation, vaccinate using seasonal administration (meaning **September–January** in most of the United States)
- **Nirsevimab¹**
 - For infants <8 months of age, immunize shortly before season onset (e.g., **October**)
 - For infants born during **October–March**, immunize within 1 week of birth
- **AI/AN:** Nirsevimab should continue to be offered to **American Indian and Alaska Native** children aged 8–19 months who are not palivizumab-eligible and who live in remote regions or in communities with known high rates of RSV among older infants and toddlers.

[http](#)

¹In jurisdictions with seasonality that differs from most of the continental United States (e.g., Alaska, jurisdictions with tropical climates), providers should follow state, local, or territorial guidance on timing of administration

Source: <https://www.cdc.gov/vaccines/acip/meetings/downloads/slides-2024-06-26-28/05-RSV-Mat-Peds-Jones-508.pdf>

Recommendations for additional RSV vaccine doses in subsequent pregnancies

- People who received a maternal RSV vaccine during a previous pregnancy are not recommended to receive additional doses during future pregnancies
- Infants born to people who were vaccinated only during a prior pregnancy should receive nirsevimab
- Recommendations can be updated in the future if additional data are available



<https://www.cdc.gov/mmwr/volumes/72/wr/mm7241e1.htm>

Source: <https://www.cdc.gov/vaccines/acip/meetings/downloads/slides-2024-06-26-28/05-RSV-Mat-Peds-Jones-508.pdf>

Co-administration of RSV vaccines and other vaccines

In accordance with General Best Practice Guidelines for Immunization, coadministration of RSV vaccines with other adult vaccines is acceptable.*

This includes giving RSV vaccines simultaneously with seasonal influenza vaccines, COVID-19 vaccines, pneumococcal vaccines, Td/Tdap, and recombinant zoster vaccine (Shingrix).

SOURCE: <https://www.cdc.gov/vaccines/acip/meetings/downloads/slides-2024-06-26-28/12-RSV-Adult-Melgar-508.pd>

SOURCE: <https://www.cdc.gov/vaccines/hcp/acip-recs/general-recs/timing.html>

Upcoming Presentations

Clinical Office of Immunization Webinars & Training:
Get Continuing Education Credits for watching or attending [Webinars](#).



2024-25 Respiratory Virus Immunization Webinar

- **Date:** September 17th
- **Time:** 12 – 1 pm
- Content will include:
 - Clinical overview of immunization recommendations and epidemiology of influenza, COVID-19, and RSV.
 - Ordering and Distribution guidance for all Fall Immunizations.

[Register here](#)

Assessments and Data

- **Date:** September 25th
- **Time:** 10:05am-11:00am



Additional State Partner Updates

Comments & Questions



NORTHWEST PORTLAND AREA
INDIAN HEALTH BOARD
Indian Leadership for Indian Health